

# SMART ROTARY EGLU AUTODOOR

Assembly guide



Omlet

# READY TO GO AUTO?

Your new Rotary Autodoor is here, and with a few simple steps you can have it up and running like clockwork.



Watch our step by step video to get it right first go.



[www.omlet.us/how\\_to\\_build](http://www.omlet.us/how_to_build)

# SMART MOVE

Scan to download the Omlet app and make your Autodoor smart. If only being smart was always that simple.



- Omlet's Smart Rotary Eglu Autodoor is designed for use solely as an automated way to open and close access to a chicken coop. It is not a device that will care for your chickens. As the owner you will still need to carry out all the routine daily checks to ensure the health and safety of your chickens, such as ensuring your chickens have access to food and water.
- Please read the instruction manual provided before using this product.
- You must follow the assembly instructions to make sure the product works as intended.
- The product is only to be used for its intended purpose.
- There is a danger of trapping your chickens so keep the product free from dirt and obstructions in order to ensure correct operation of the crush detector.
- The Smart Rotary Eglu Autodoor is designed for use with adult chickens. Disable product if there are chickens under 15 weeks of age in the chicken house.
- Check your chickens every morning to ensure they have access to food and water.
- Do not rely solely on this product to care for your chickens.
- Keep your fingers away from the moving door.
- Ensure excess cable is stowed to avoid tripping or accidental pulling.
- Make sure that the control panel is completely assembled before turning the power on.
- Do not disassemble the control panel when it is wet.
- Ensure that the product is securely attached before it is operated.
- Children must be supervised when using the Smart Rotary Eglu Autodoor - it is not a toy.
- Any other use beyond what is specified shall be considered as improper use. Any direct commercial or industrial use is also deemed to be improper. Omlet is not liable for any damage resulting from such use. The user alone bears the risk.

15	What you have received	85	Quickstart Guide
18	What you will need	88	Calibration
20	Exploded diagrams of Autodoor & Control Panel	88	Change Language
23	Assembly to Eglu Go	89	How do you want to use the Smart Rotary Eglu Autodoor?
38	Assembly to Eglu Cube	89	Manual Mode
52	Assembly to Eglu Pro	90	Time Mode
68	Control Panel Assembly	92	Light Mode
73	Control Panel Mounting	136	Emergency Fail Safe/ Troubleshooting

## What you have received

### 106.0001 Boxed Rotary Autodoor



X1  
Gear Case  
06.0005



X1  
Base  
106.0008



X1  
Door Switch  
106.0017



X1  
Retaining Bracket  
106.1002



X1  
Control Panel  
107.0014



X1  
Mounting Plate  
014.1135



X1  
Switch Template  
Go  
106.1036



X1  
Switch Template  
Cube & Pro  
106.1037



X1  
2m UK  
Power Supply  
810.1220

or  
order  
ou  
of  
oppure  
o  
eller



X1  
2m US  
Power Supply  
810.1221

or  
order  
ou  
of  
oppure  
o  
eller



X1  
2m AUS  
Power Supply  
810.1222

or  
order  
ou  
of  
oppure  
o  
eller



X1  
2m EU  
Power Supply  
810.1223

## 106.0010 Rotary Autodoor Fixings Pouch



**X1**  
Base Support  
106.0014



**X1**  
CP Mount Tape  
106.1047



**X2**  
Machine Screw  
Pozi Pan  
M4 x 8mm  
800.0439



**X4**  
Machine Screw  
M4 x 9mm  
Countersunk  
800.0441



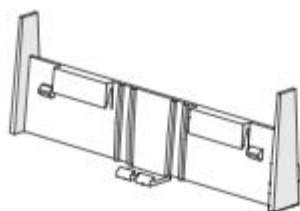
**X2**  
Self-Tapping  
Plastite Screw  
4x20mm  
800.0474



**X4**  
Cable Tie  
800.0477



### 106.0012 Rotary Autodoor Go Fixings



X1  
Go  
Front Clip  
106.1005

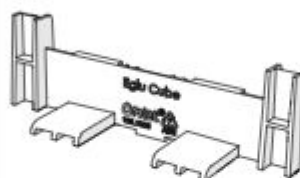


X1  
Go  
Base Foot LH  
106.1007



X1  
Go  
Base Foot RH  
106.1008

### 106.0011 Rotary Autodoor Cube Fixings



X1  
Cube  
Front Clip  
106.1006

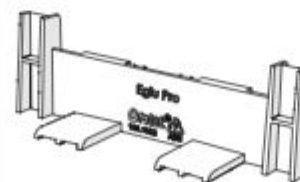
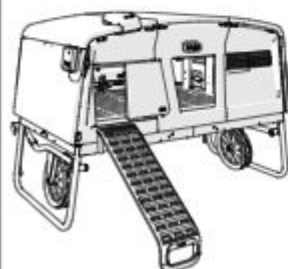


X1  
Cube  
Base Foot LH  
106.1009



X1  
Cube  
Base Foot RH  
106.1010

### 106.0013 Rotary Autodoor Pro Fixings



X1  
Pro  
Front Clip  
106.1032



X1  
Pro  
Base Foot LH  
106.1033



X1  
Pro  
Base Foot RH  
106.1034



## You will need...



X4

AA battery 1.5V

Optional



ø3/32-1/8"  
2.5-3mm

**Do not use Power Drill to tighten screws**



**Single alcohol wipe provided**



Optional Attachment Kits - sold separately

014.0056 Control Panel Mounting Bracket Cube Mk2 & Pro House



X1

Control Panel Mounting Bracket  
Cube Mk2 & Pro House  
014.0054

When connecting to Wi-Fi for smart features or system updates, scan a QR below to download the Omlet App

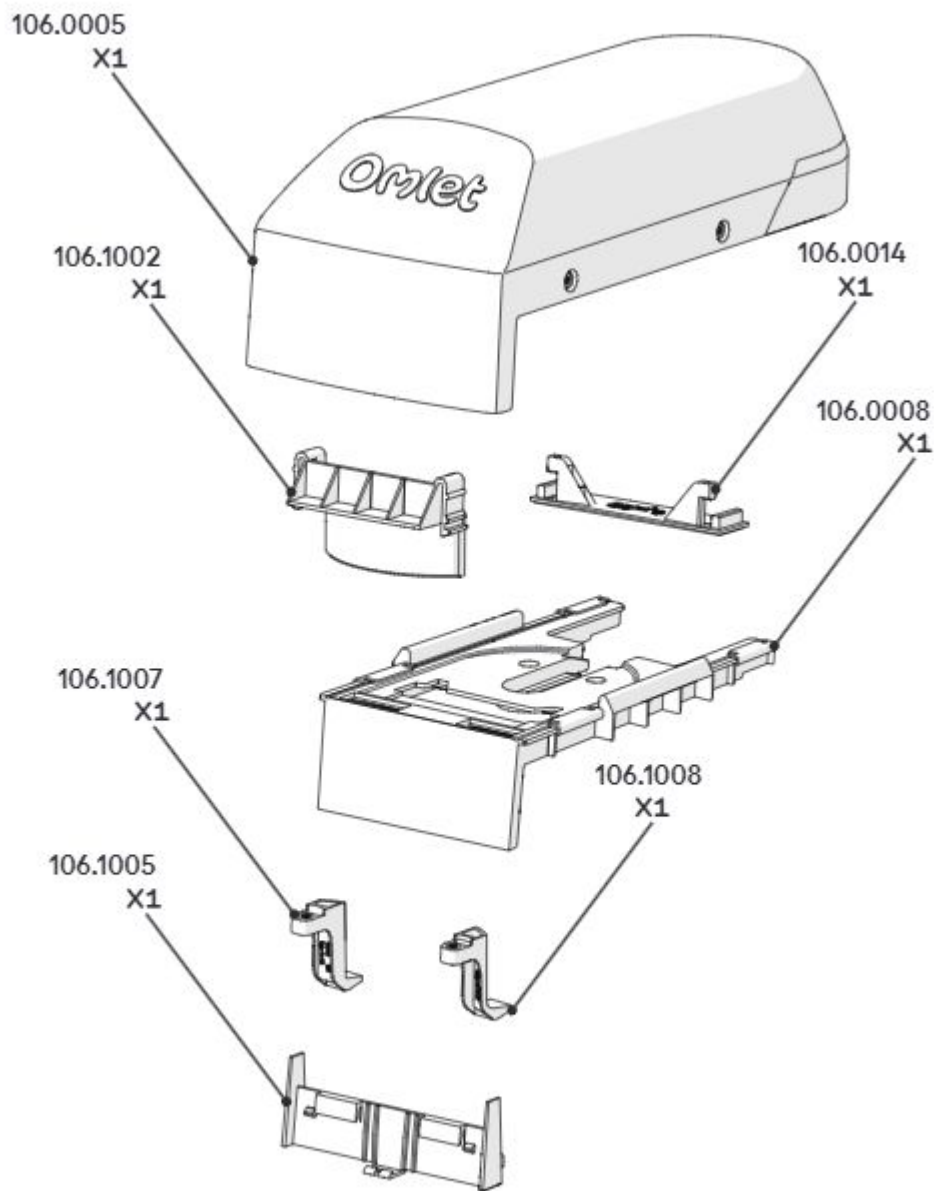


For Apple

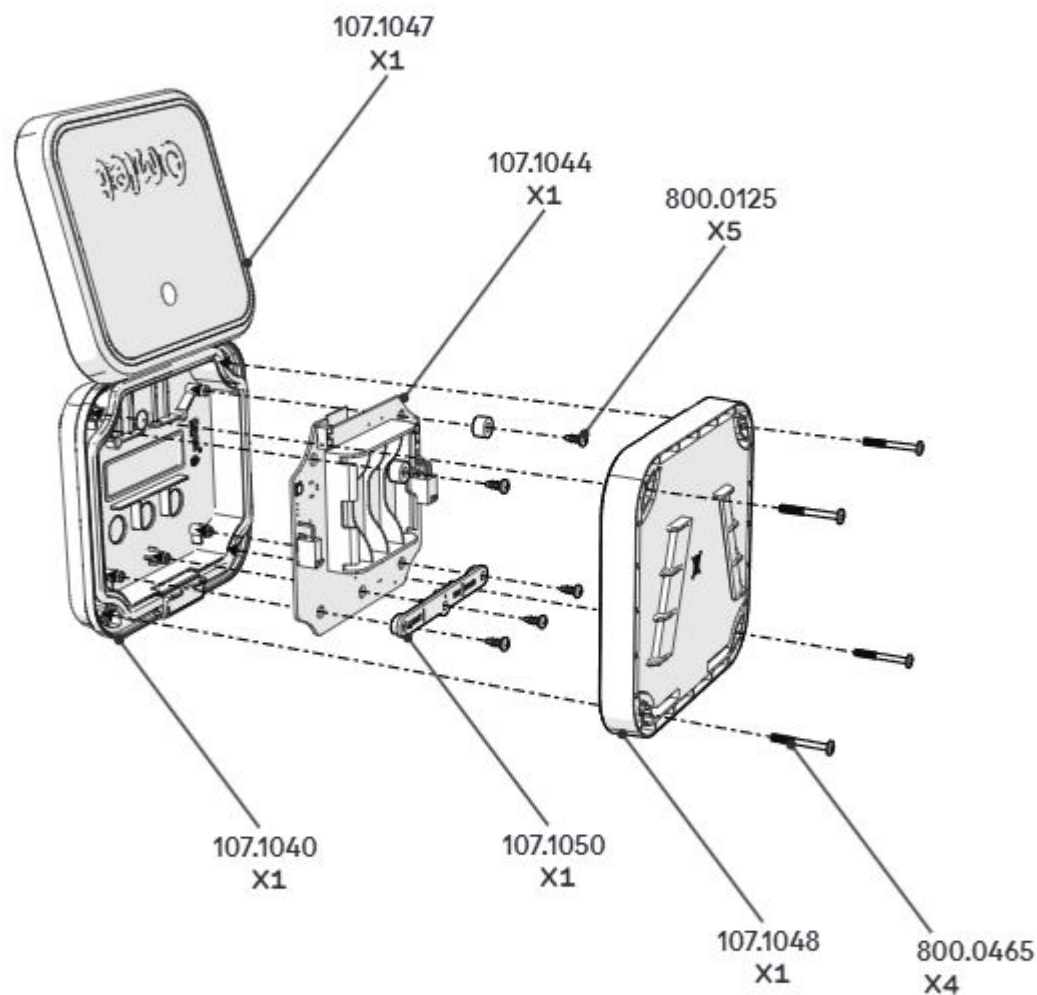


For Android

## Exploded Assembly



## Exploded Assembly - Control Panel (107.0014)

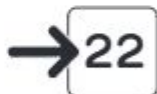


What coop are you attaching your Smart Rotary Eglu AutoDoor (106.0001) to?

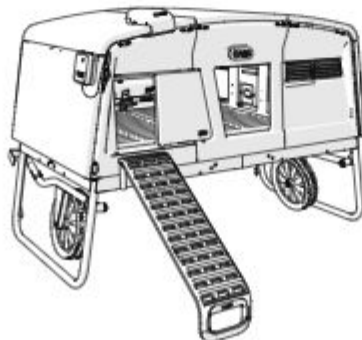
Eglu Go



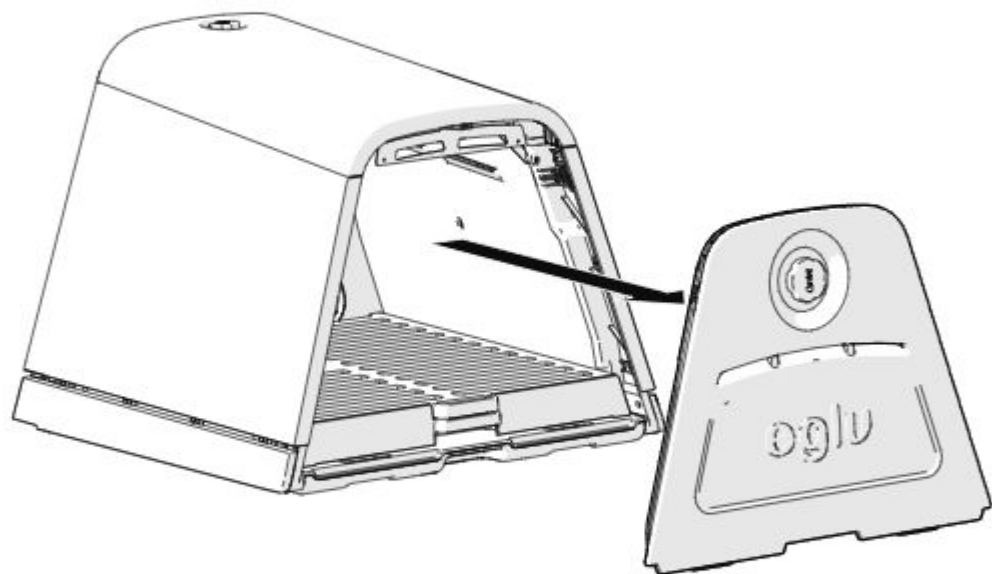
Eglu Cube Mk2



Eglu Pro



1

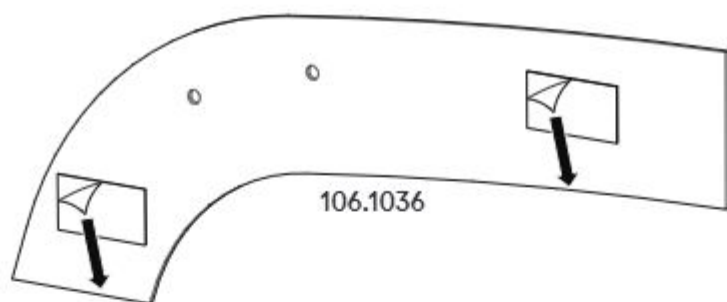


**Optional:** You can also remove the roof panel to make Steps 2-5 easier, but it must be replaced before you start Step 8

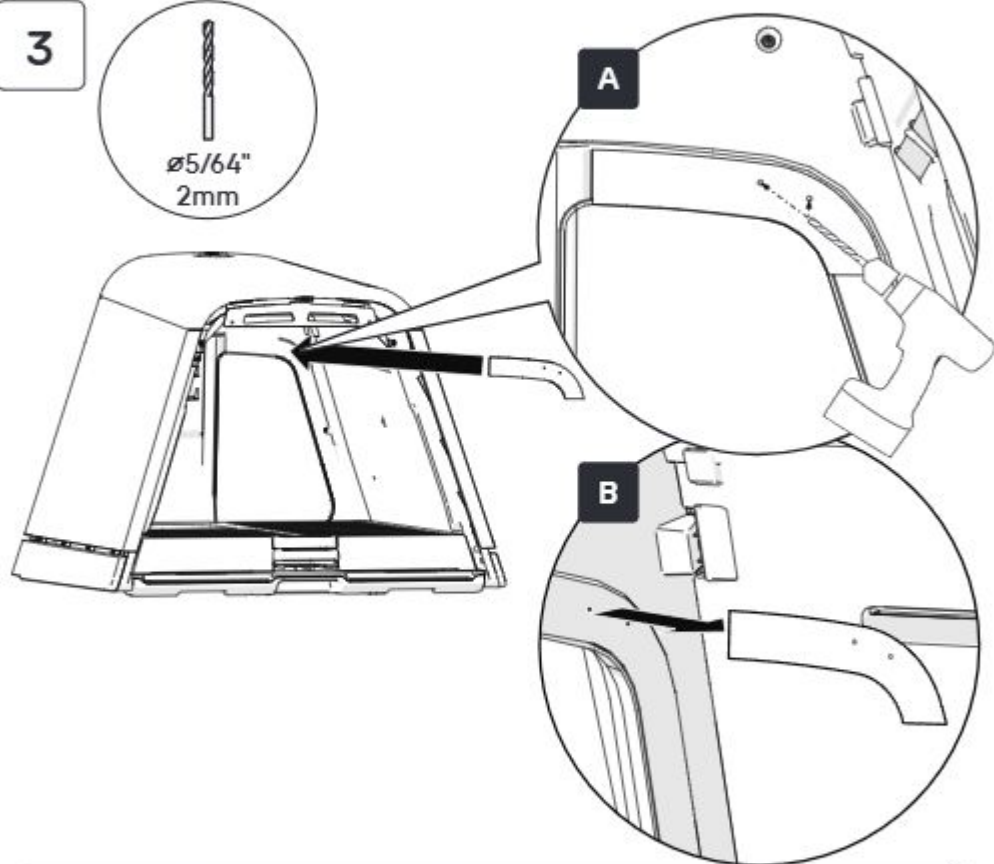




2



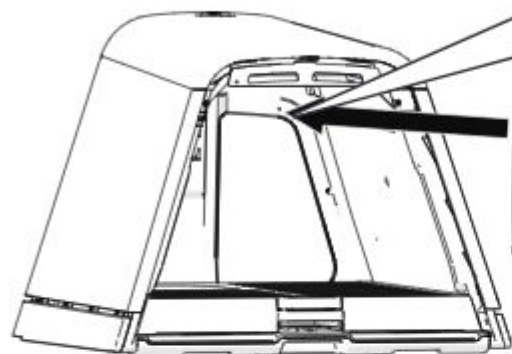
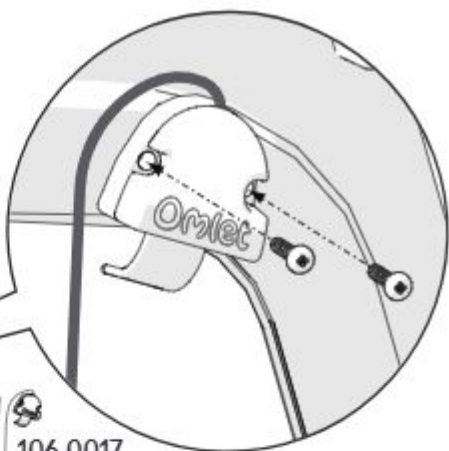
3



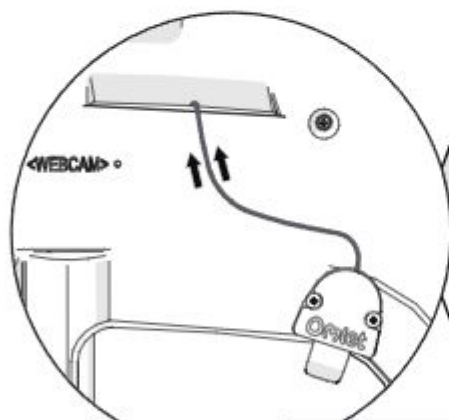
Only drill through the first inside layer of the panel



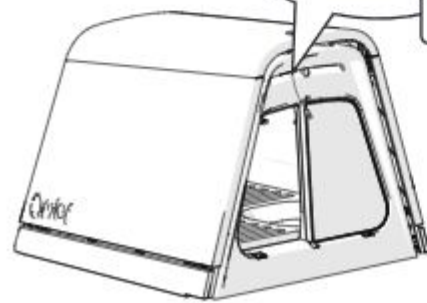
4



5



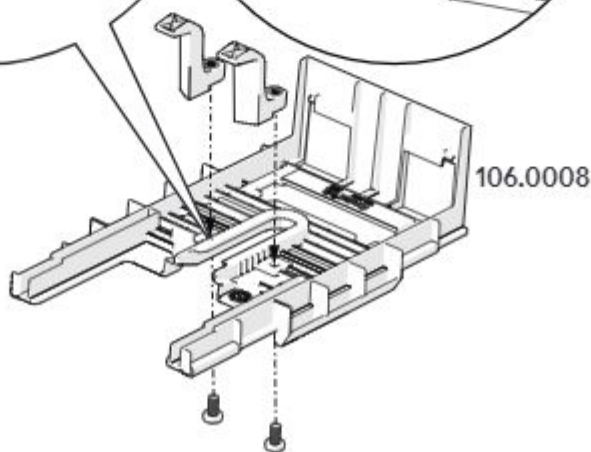
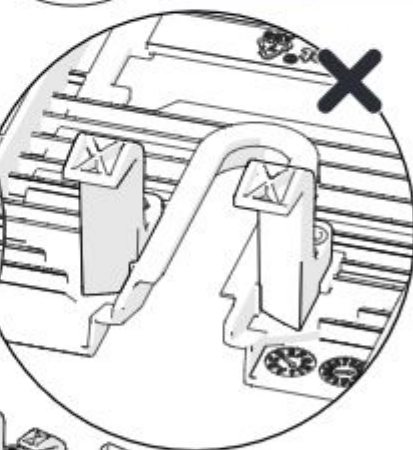
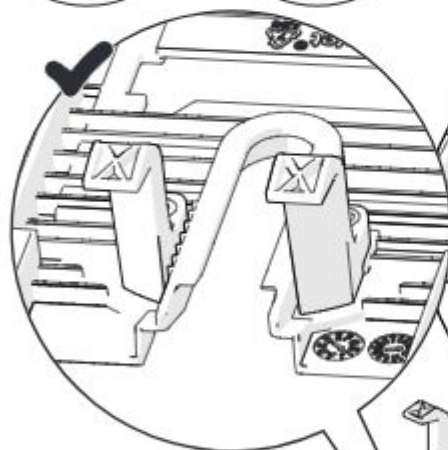
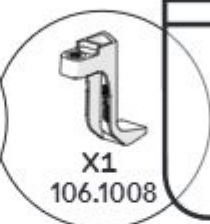
Feed wire through the vent



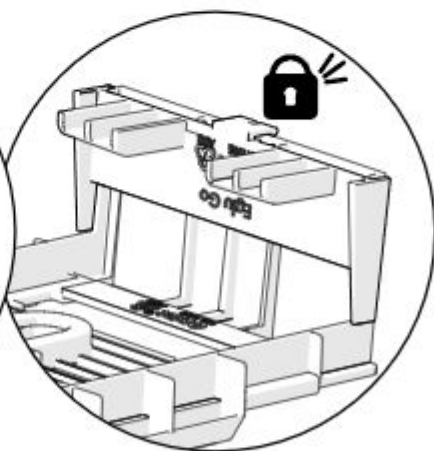
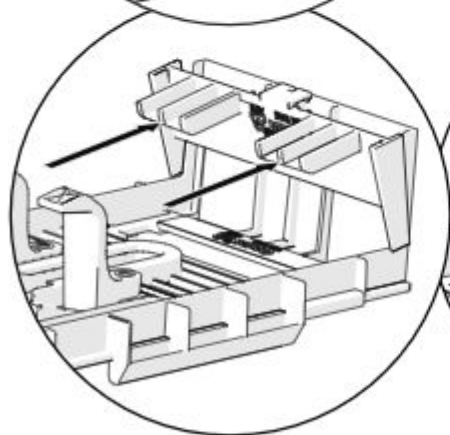
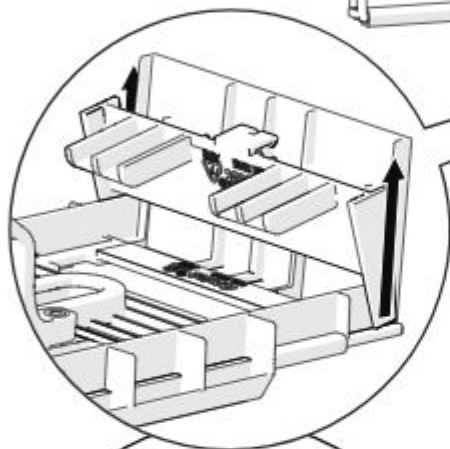
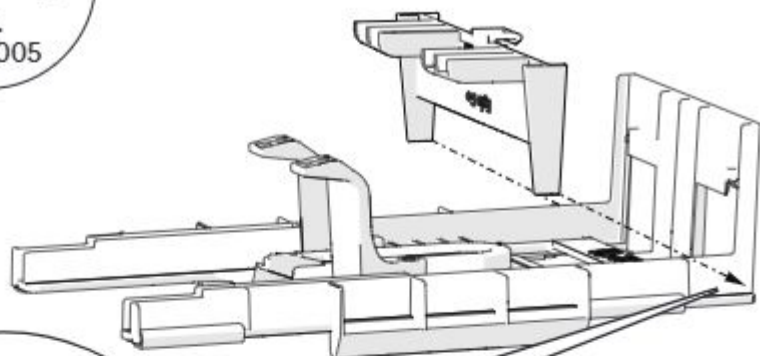
You can now reattach your back panel



6

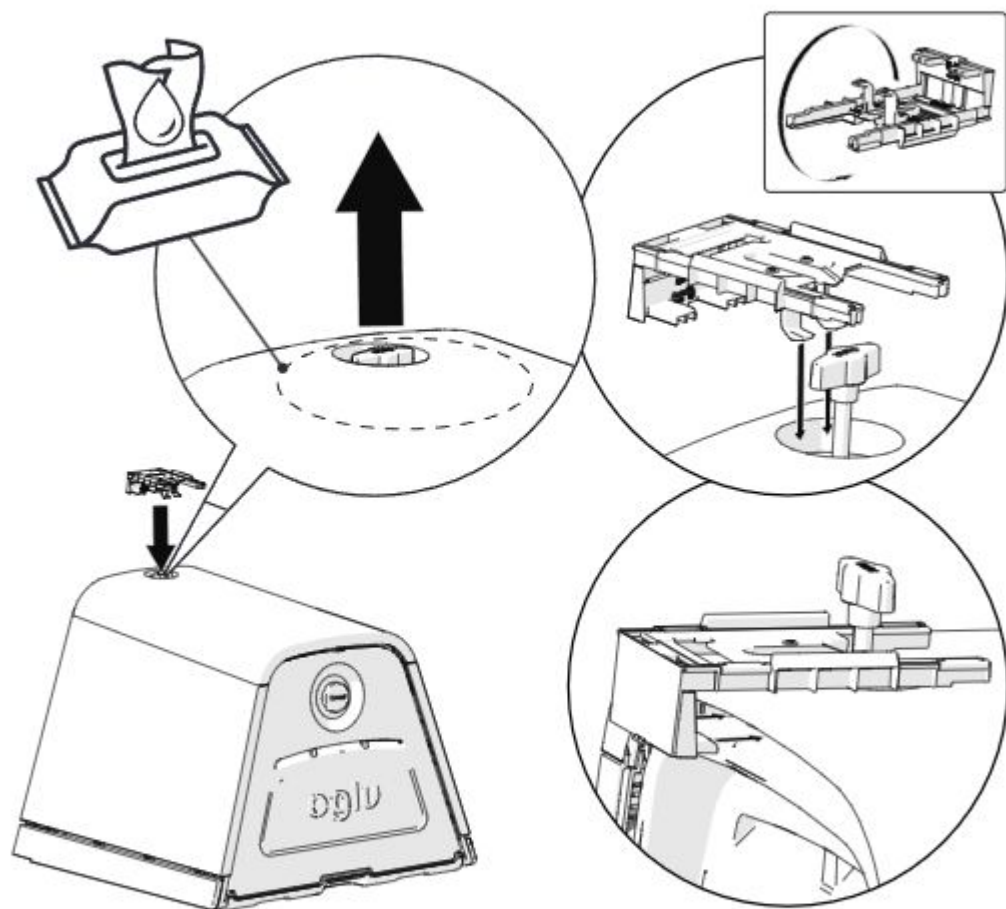


7

X1  
106.1005

8

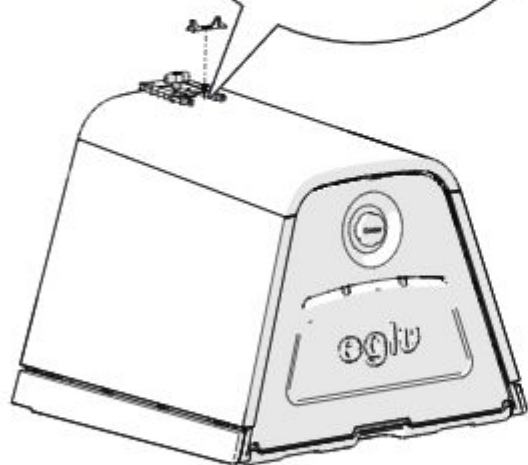
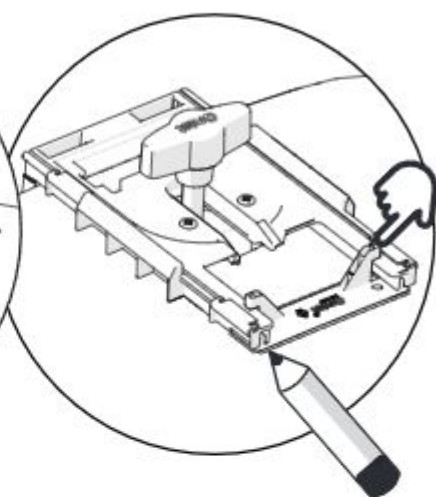
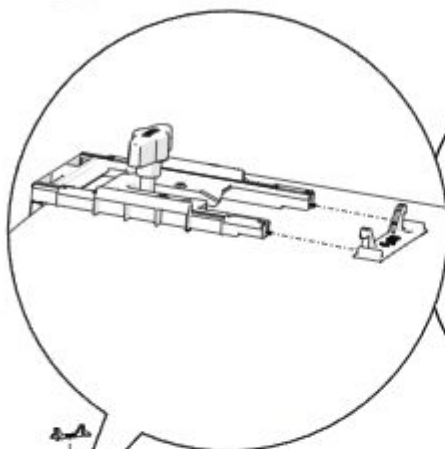
Make sure the area around your T-handle is clean and dry so your **Base Support (106.0014)** can stick to it easily



9

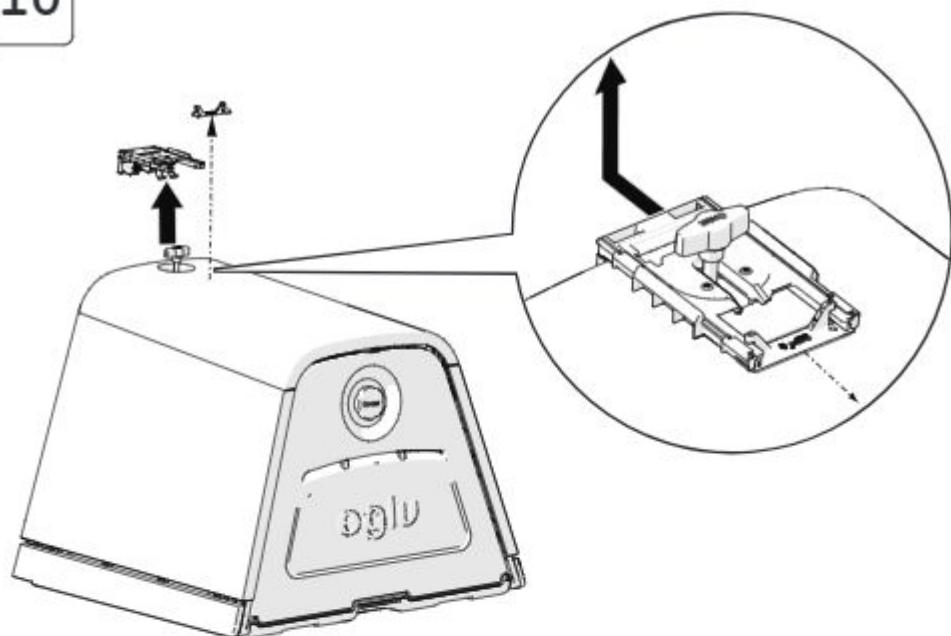


X1  
106.0014

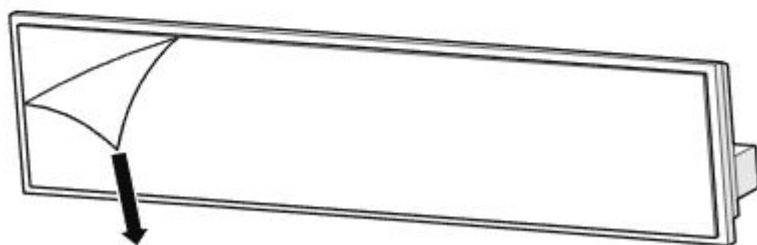
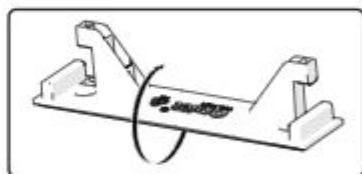


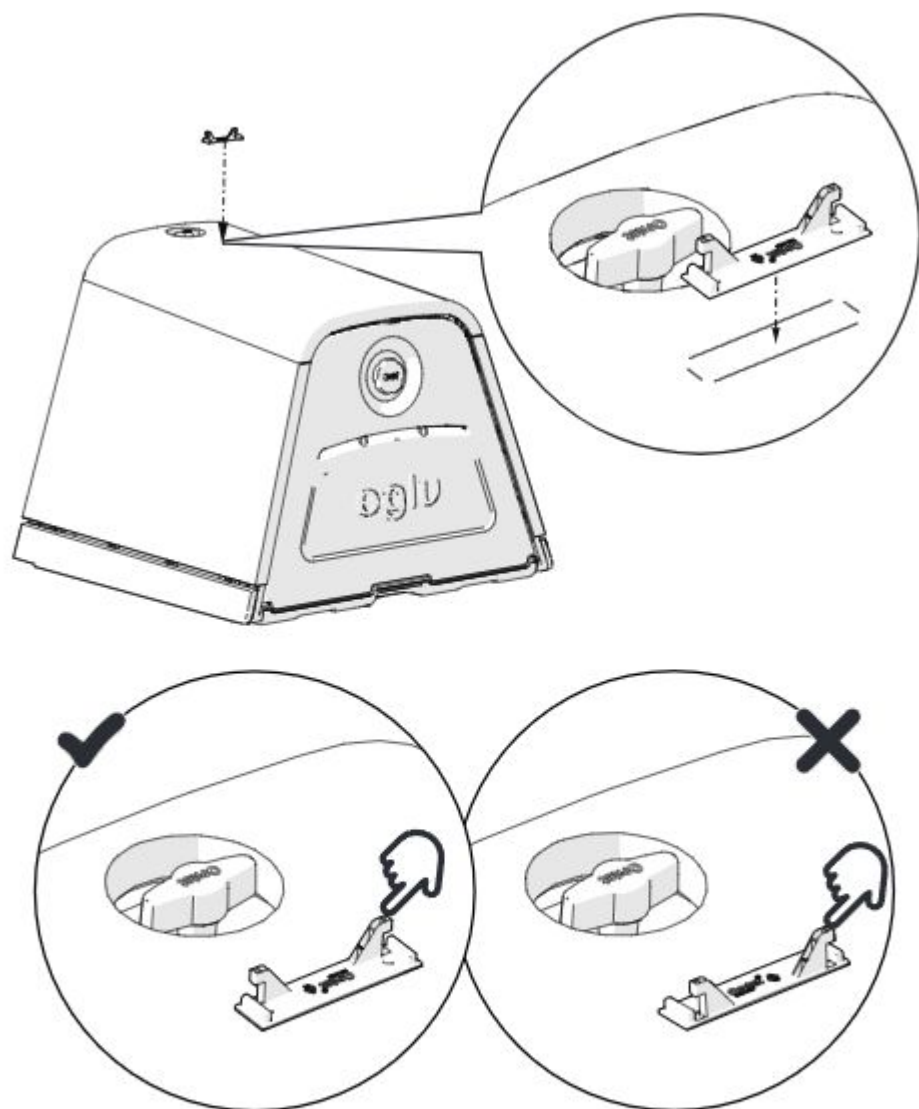


10

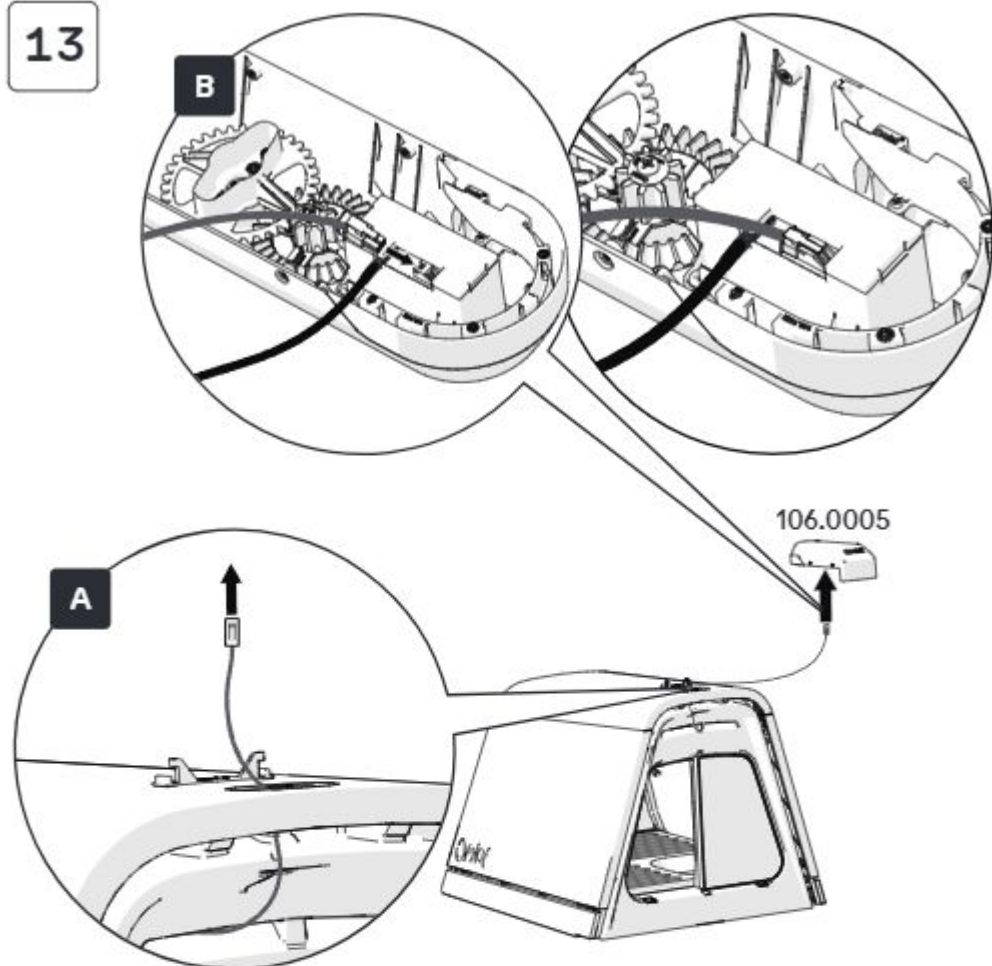


11

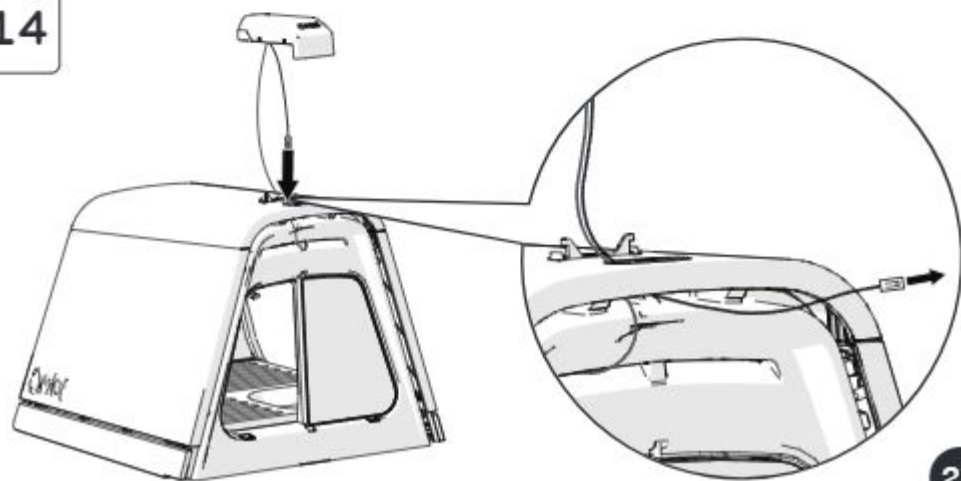


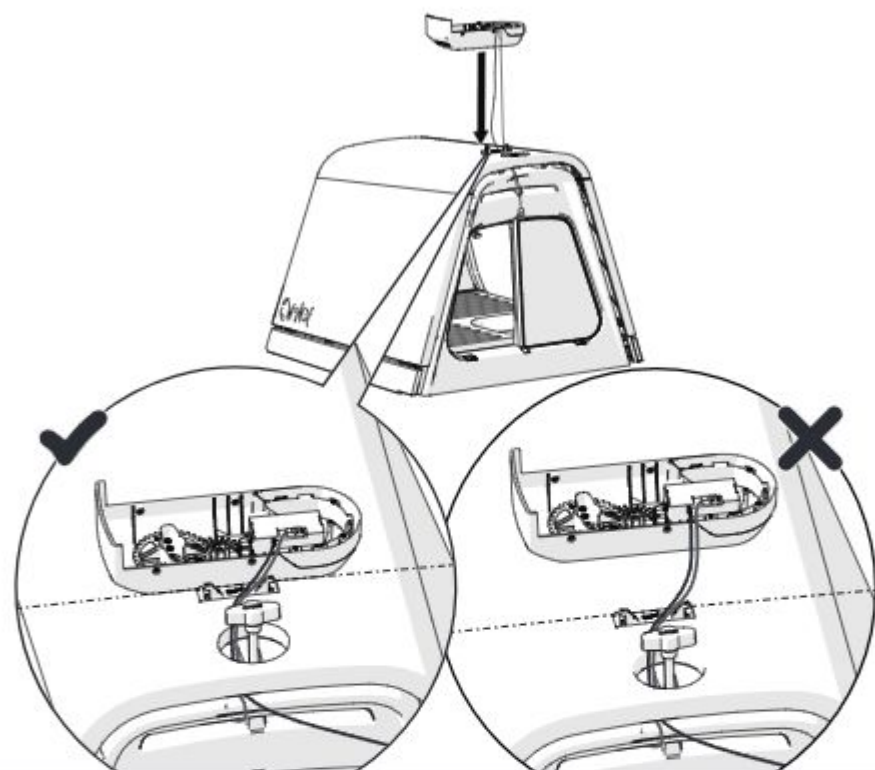


13



14

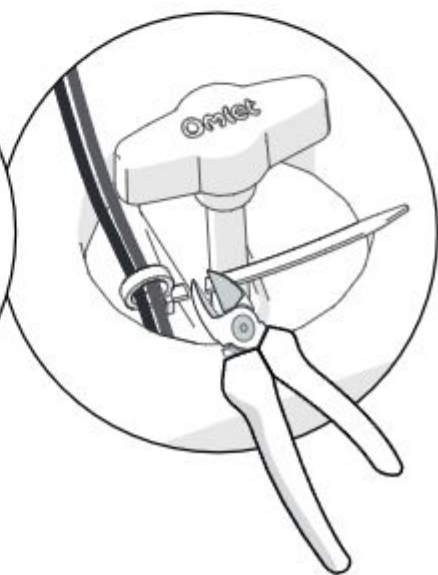
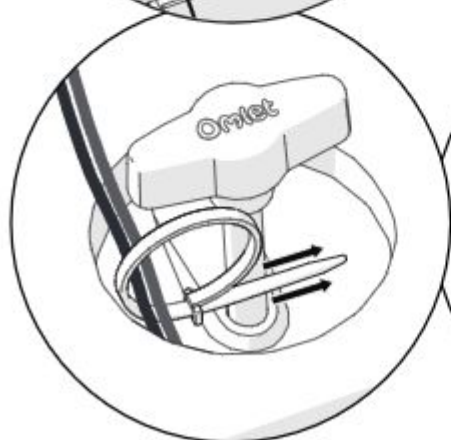
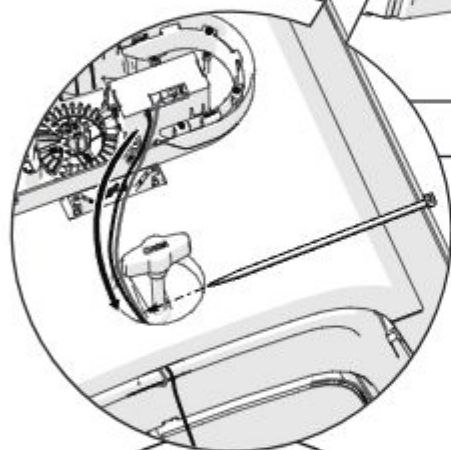
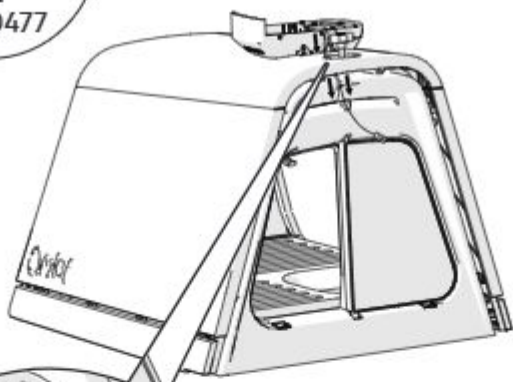




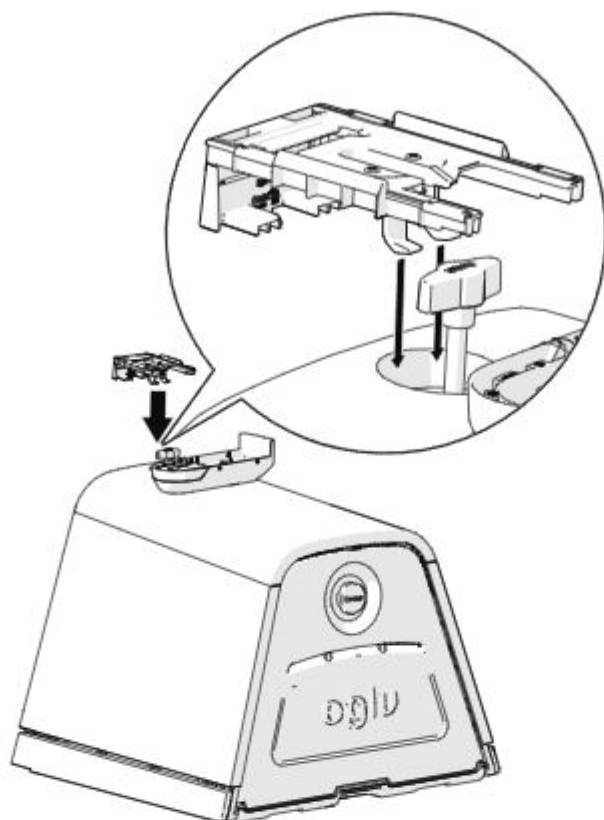
It is very important to position the gear case (106.0005) correctly on top of your coop to ensure wires will be the correct length during the next step



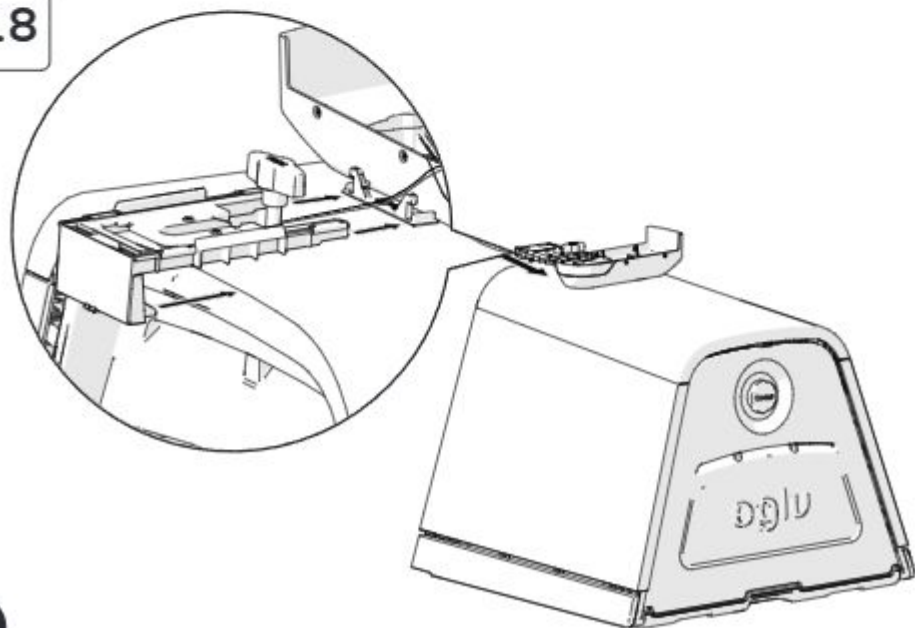
16



17

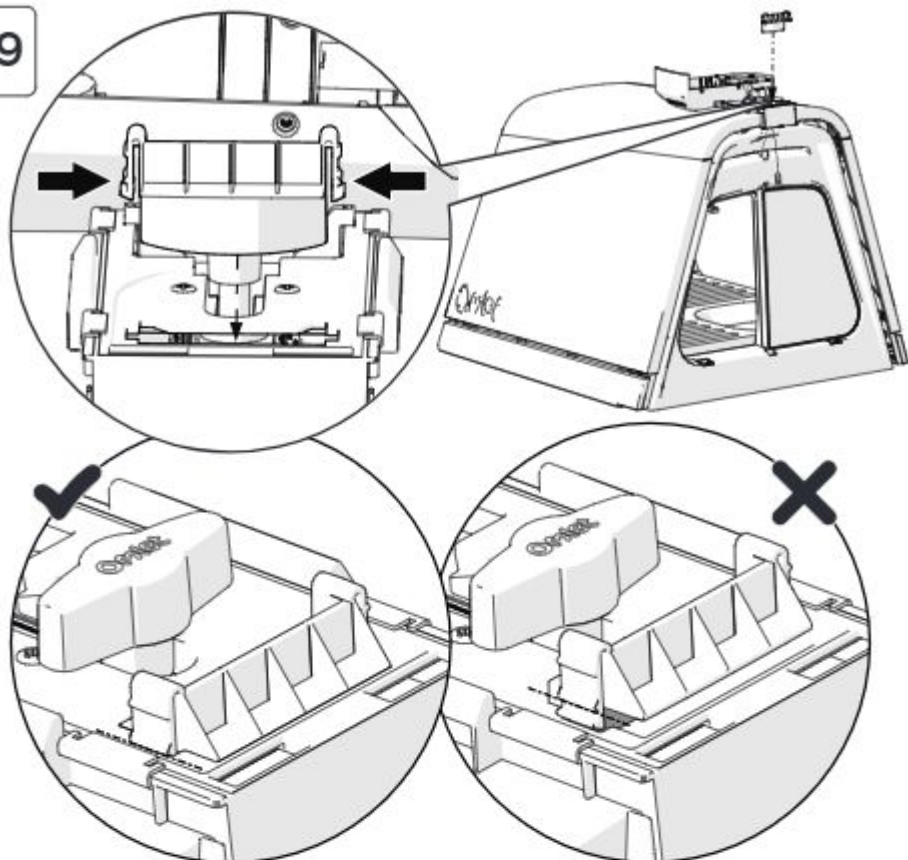


18





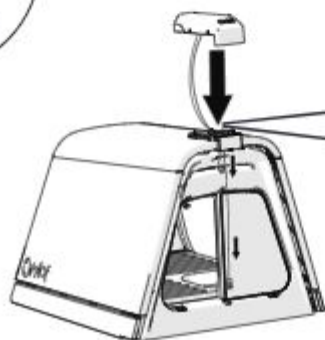
19

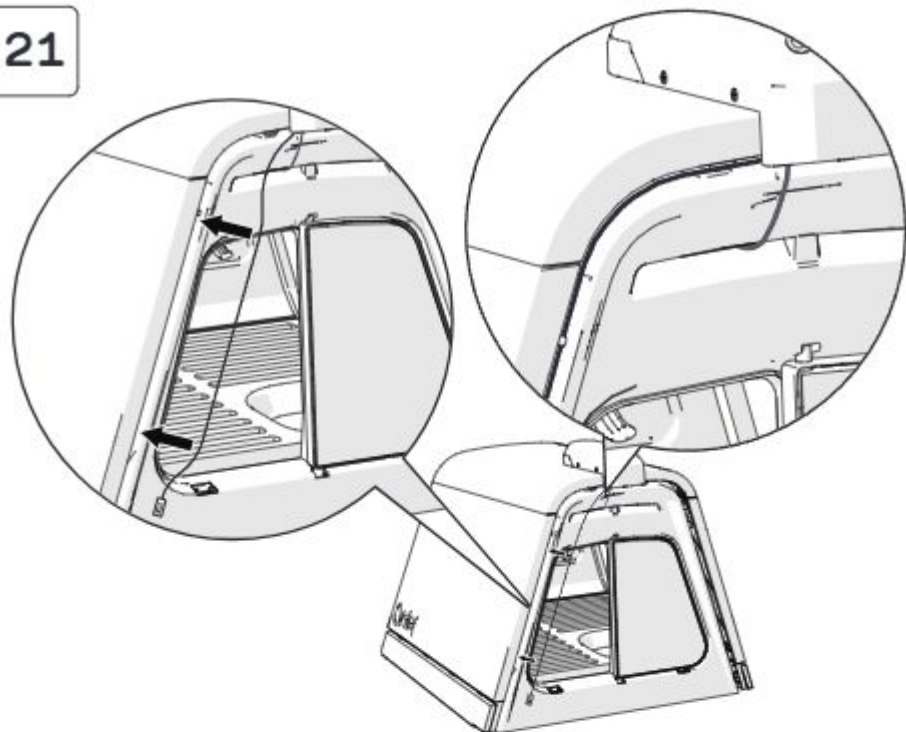


20



Pull wires tight





If you are attaching your coop to a Walk In Run Connection Kit

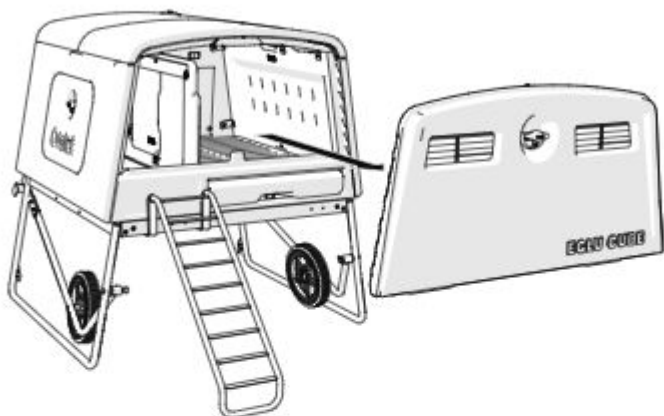
→ 68

To Assemble the Control Panel (107.0014)

→ 70

## Attaching your Smart Rotary Eglu Autodoor to an Eglu Cube

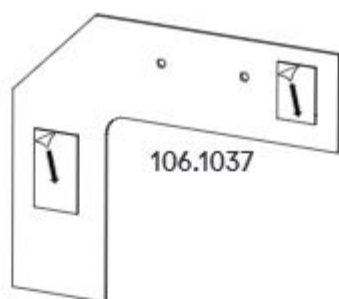
**22** Keep the Parts safe until Step 28



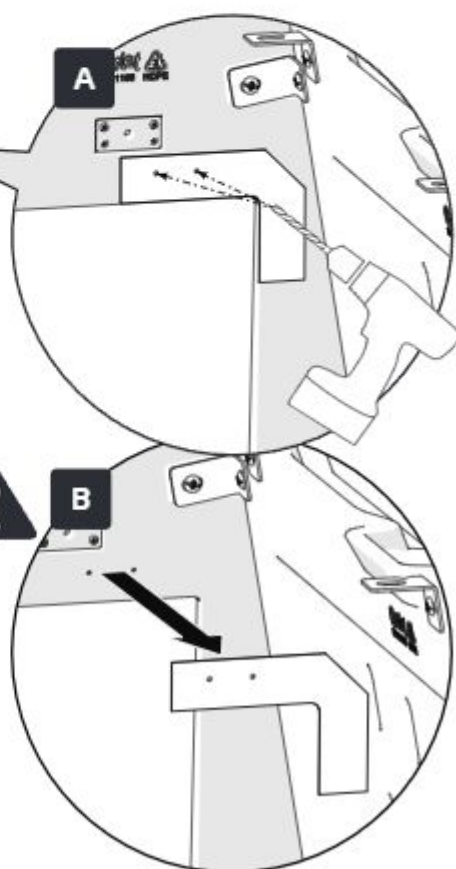
**23** Keep the part safe until Step 28



24



25



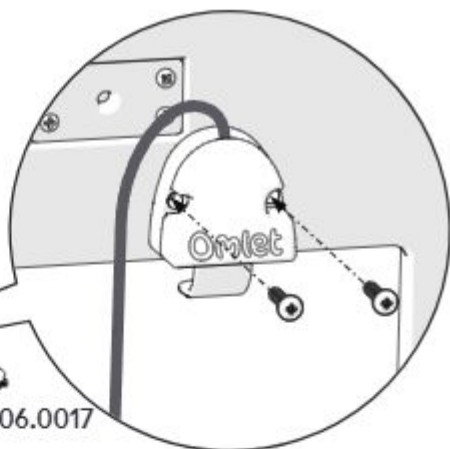
Only drill through the first  
inside layer of the panel



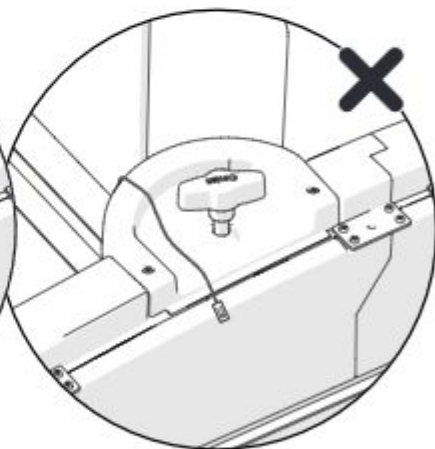
26



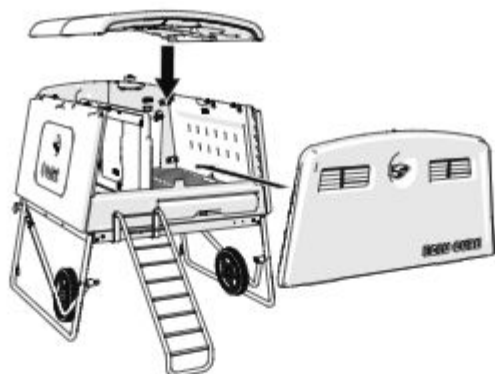
106.0017



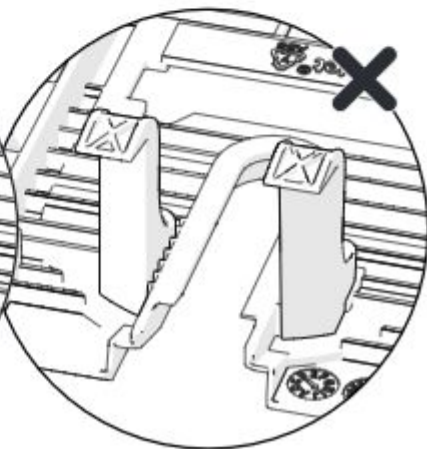
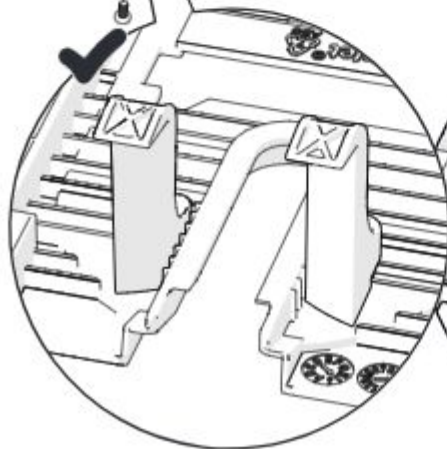
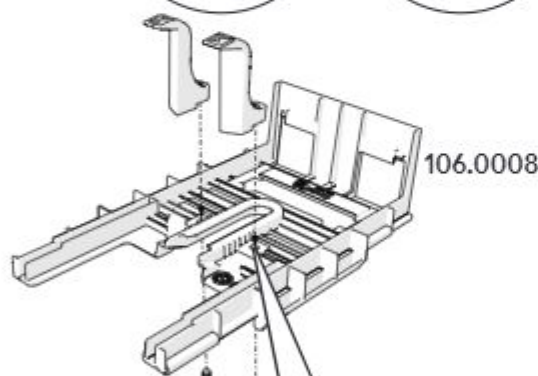
27



28

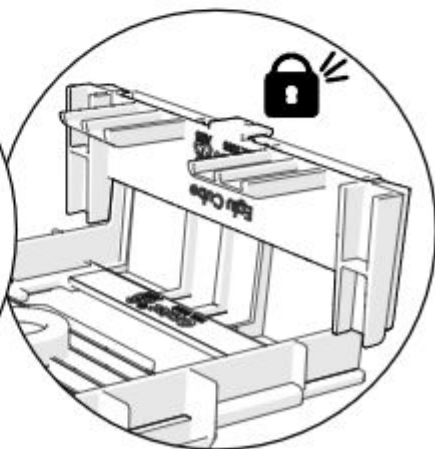
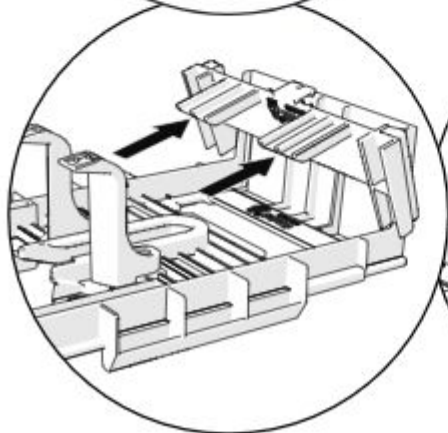
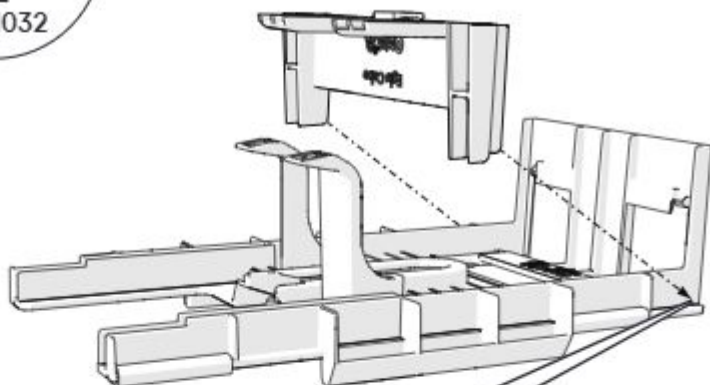


29

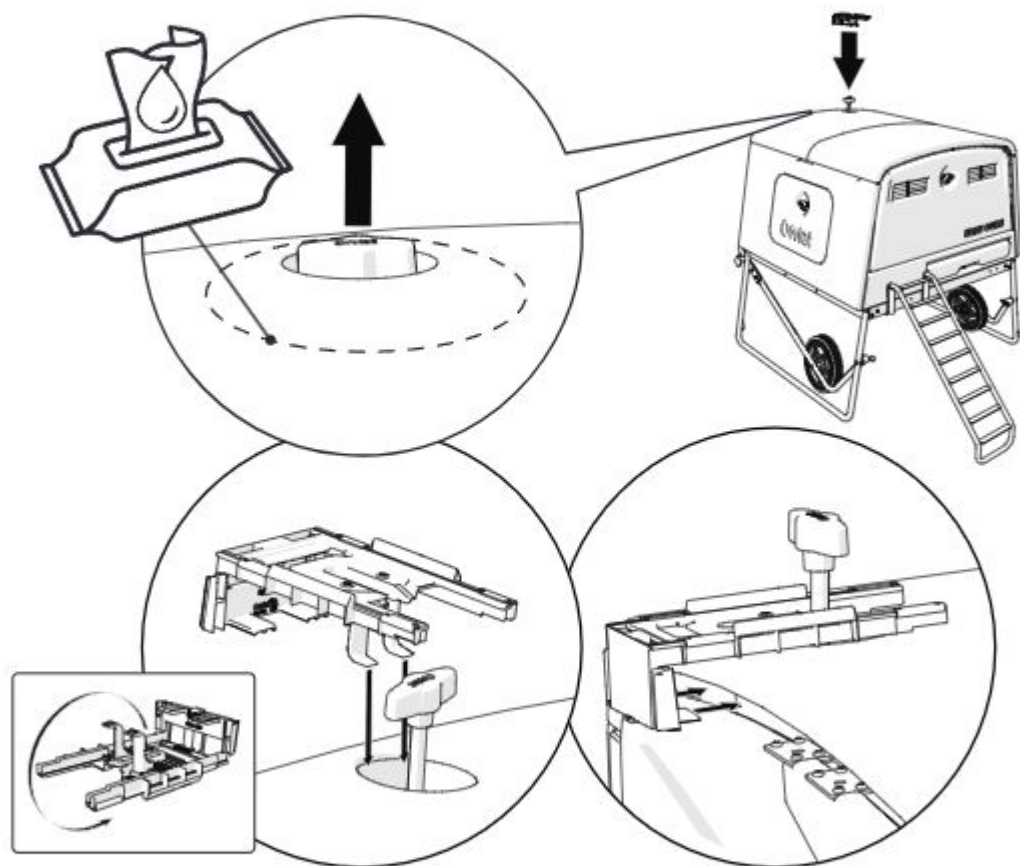




30



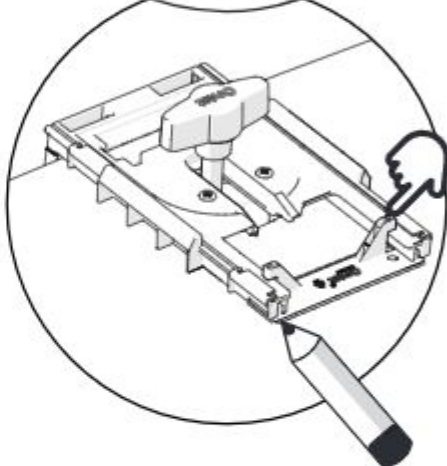
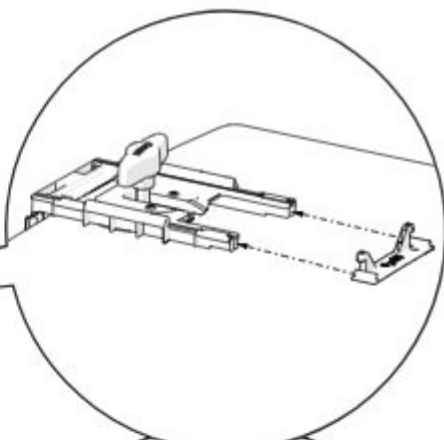
Make sure the area around your T-handle is clean and dry so your **Base Support (106.0014)** can stick to it easily



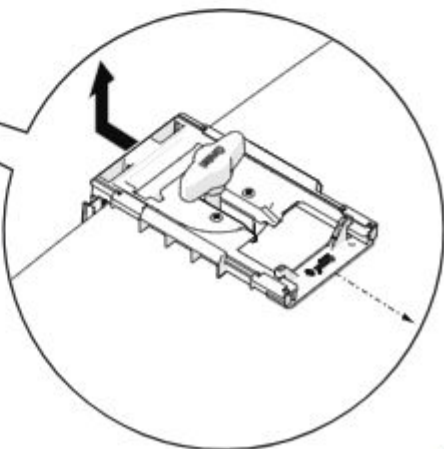
32



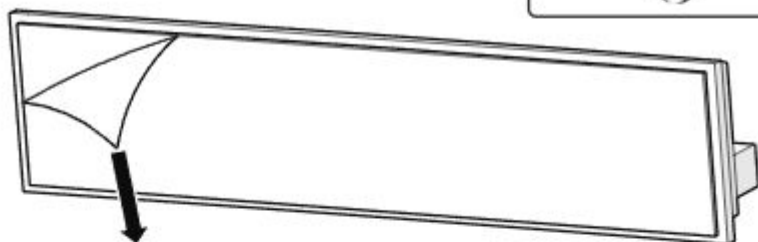
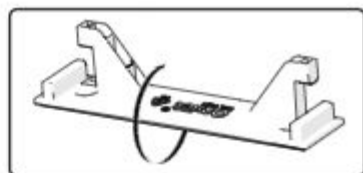
X1  
106.0014



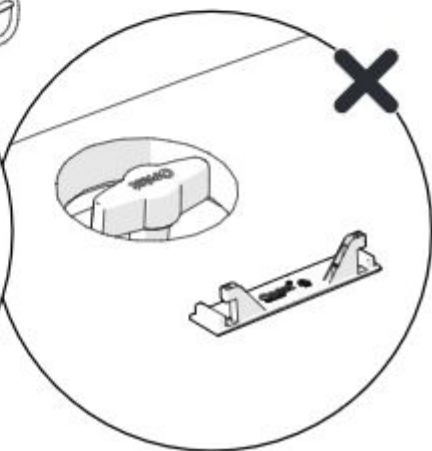
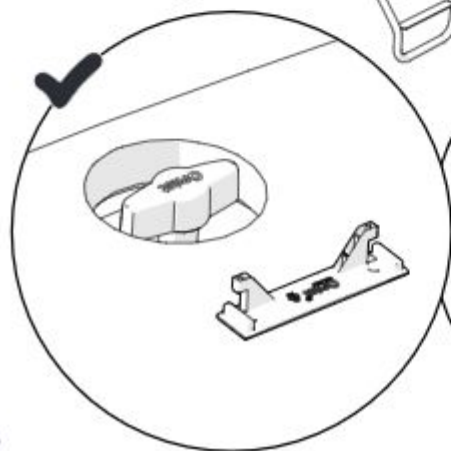
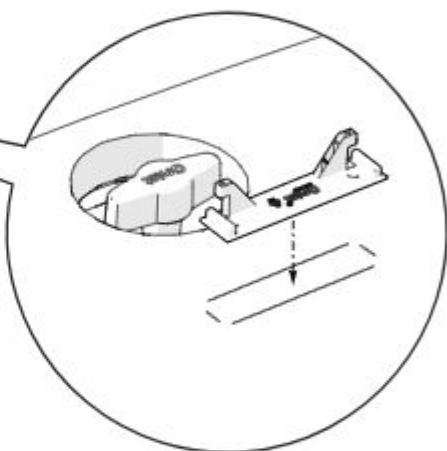
33



34



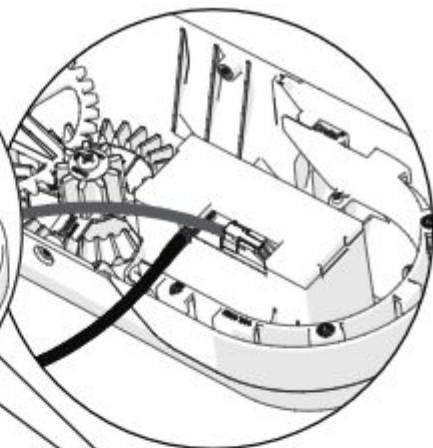
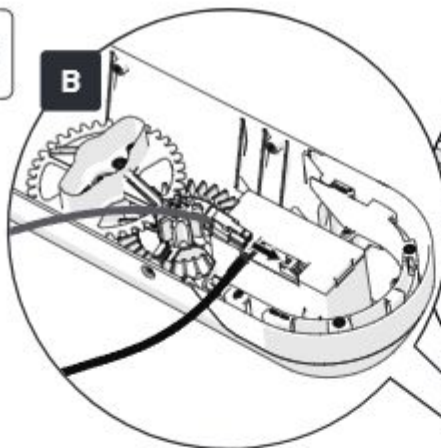
35



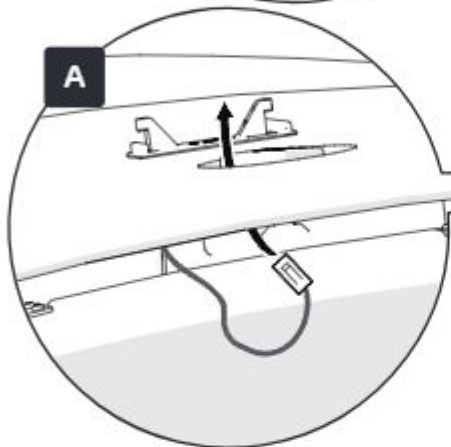
36

36

B



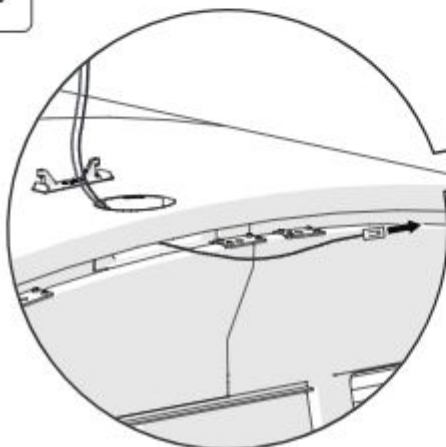
A



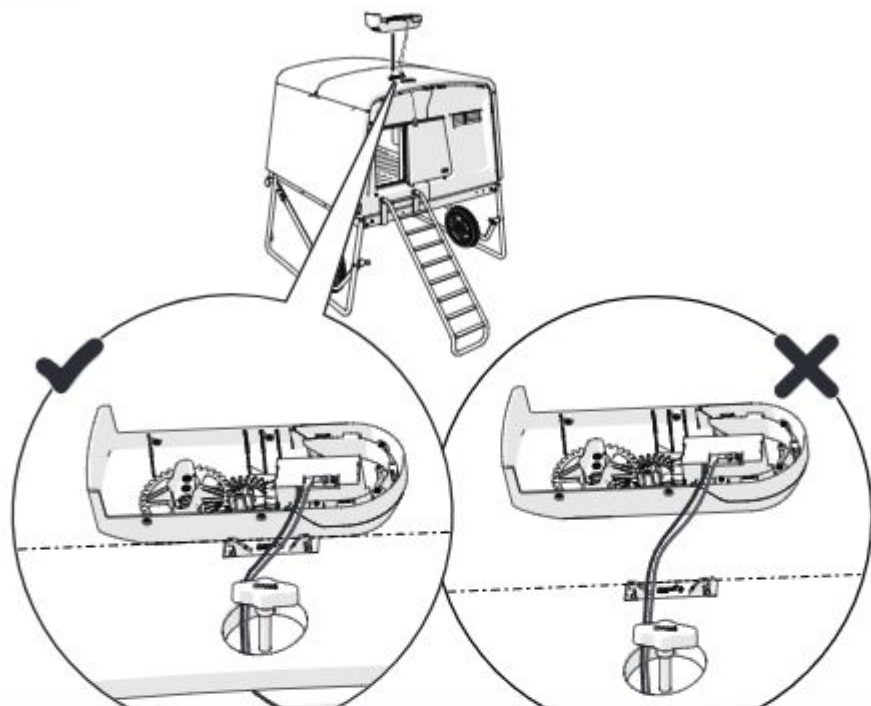
106.0005



37



37



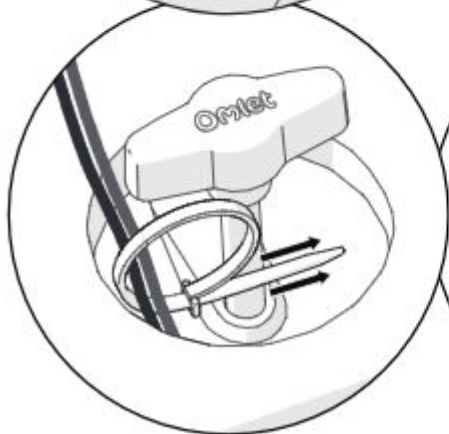
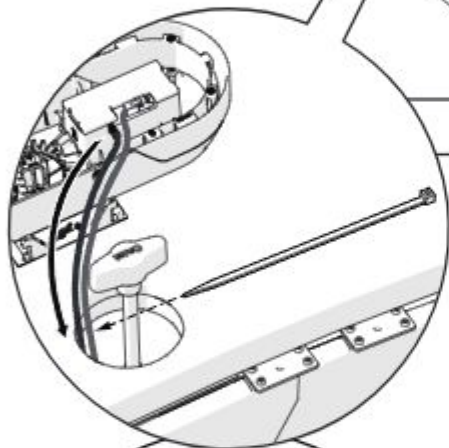
It is very important to position the gear case (106.0005) correctly on top of your coop to ensure wires will be the correct length during the next step





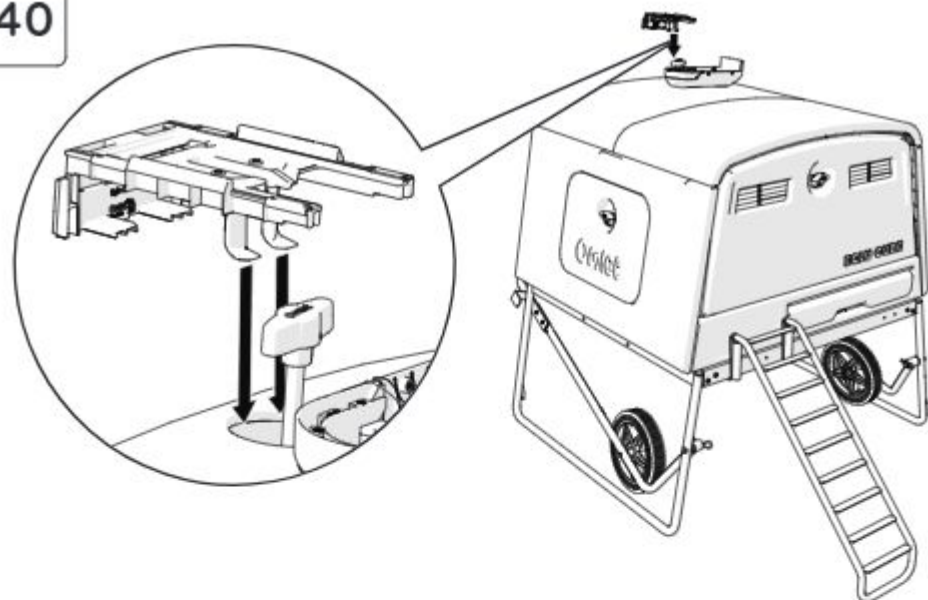


Pull wires tight

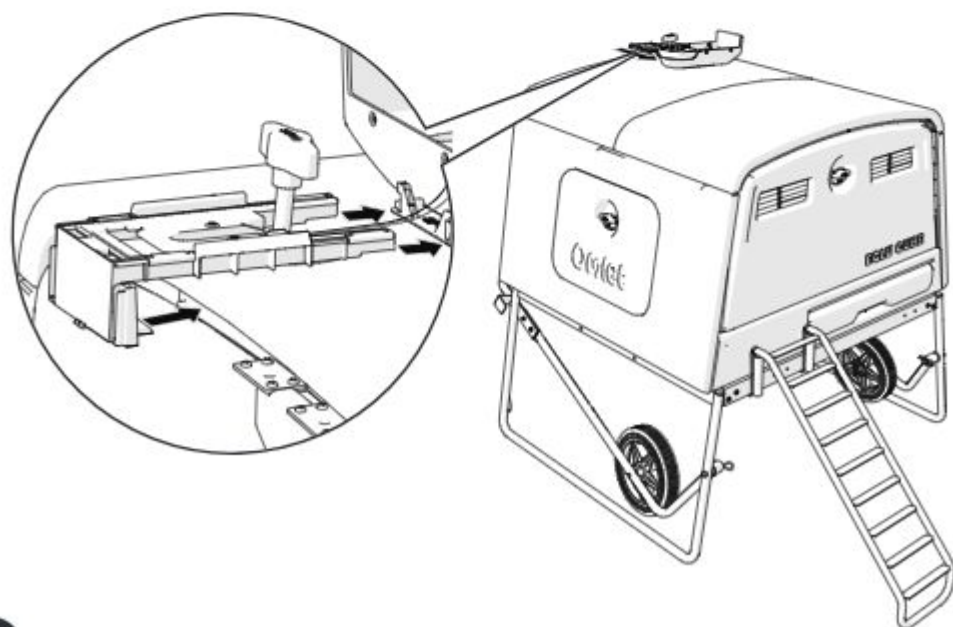




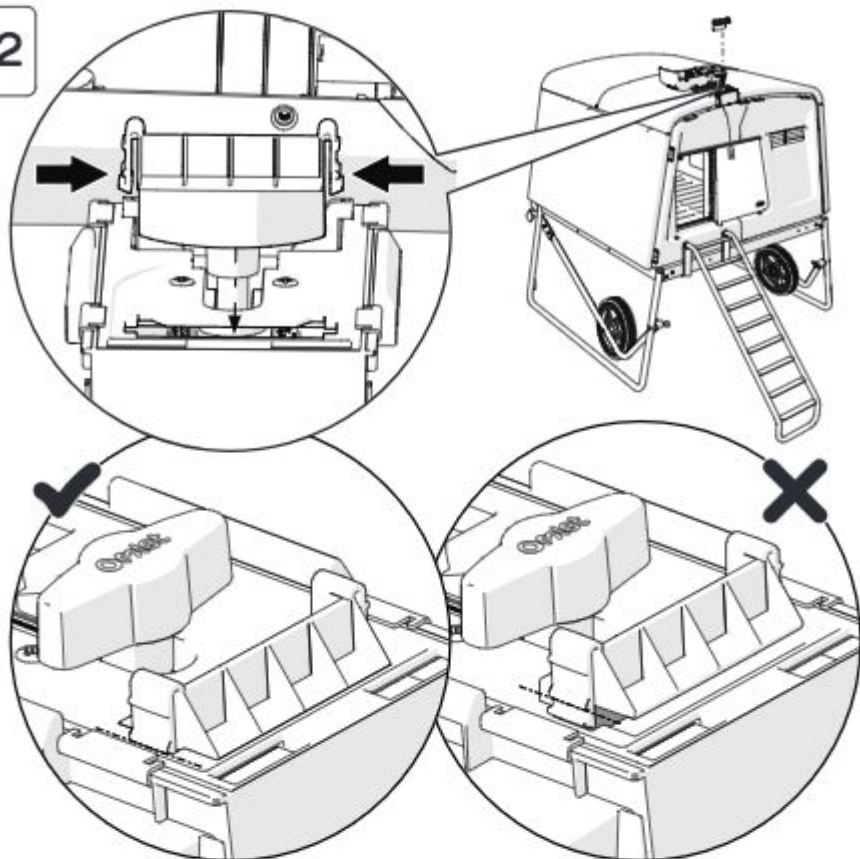
40



41



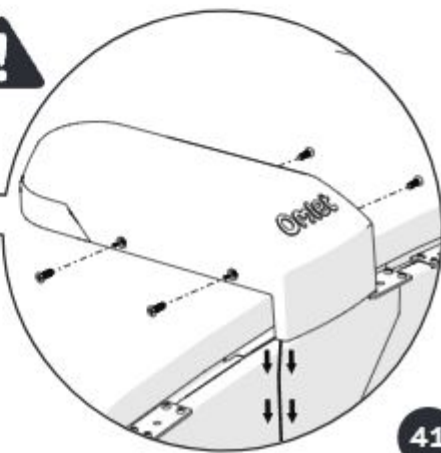
42



43

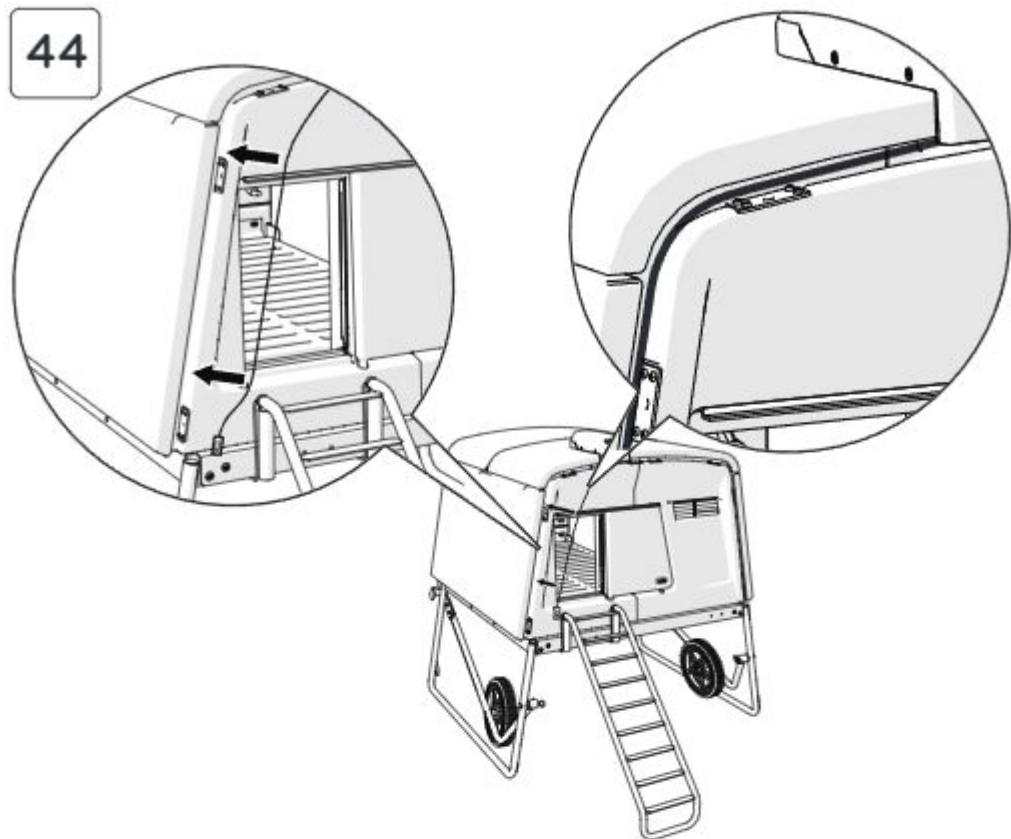


Pull wires tight



41

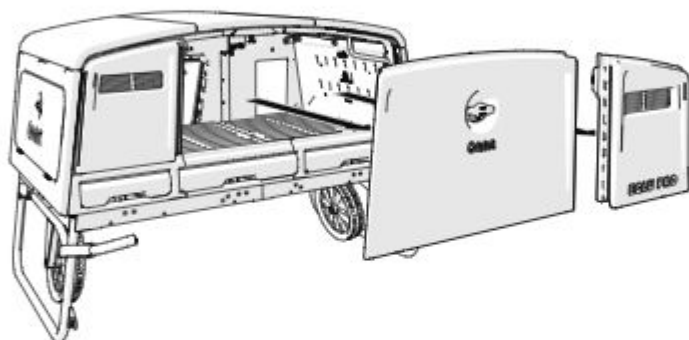
44



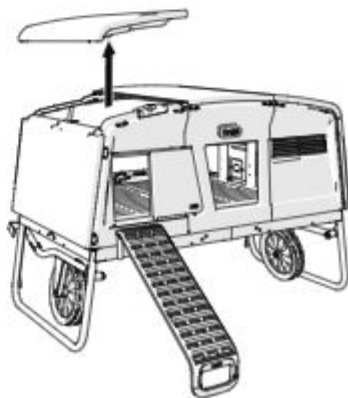
To Assemble the Control Panel (107.0014)

→ 70

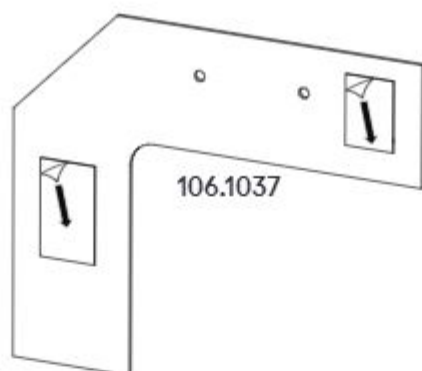
**45** Keep the Parts safe until Step 51



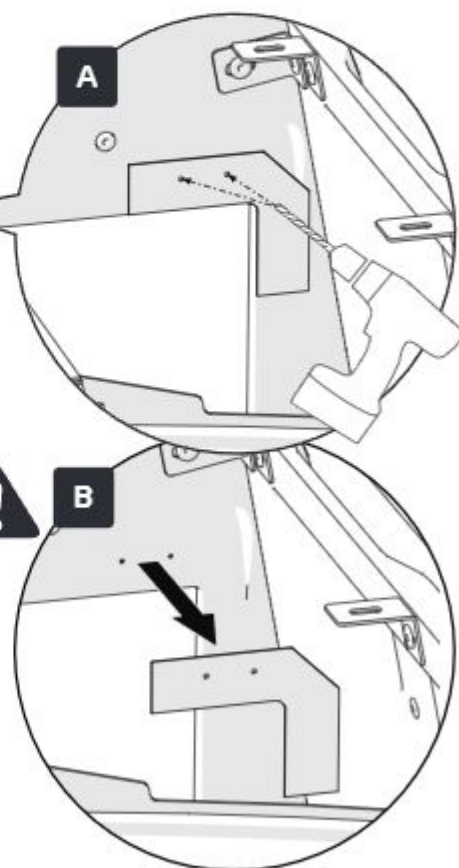
**46** Keep the part safe until Step 51



47



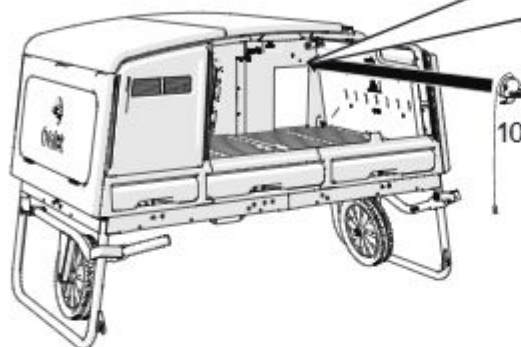
48



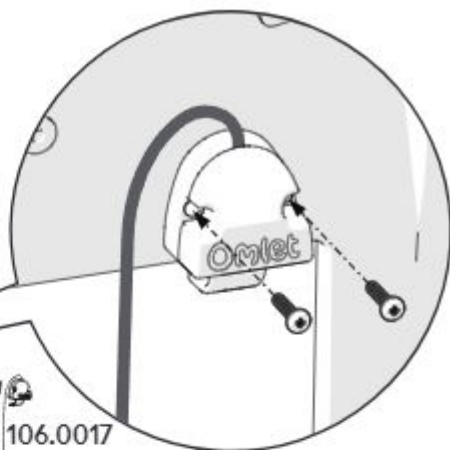
Only drill through the first inside layer of the panel



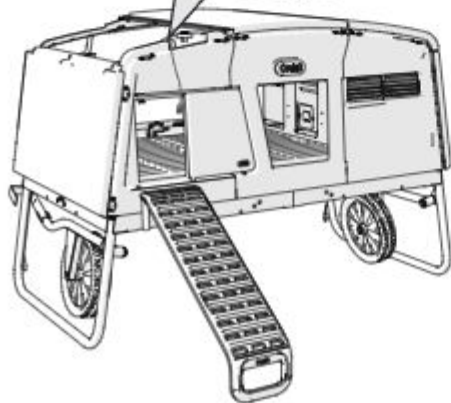
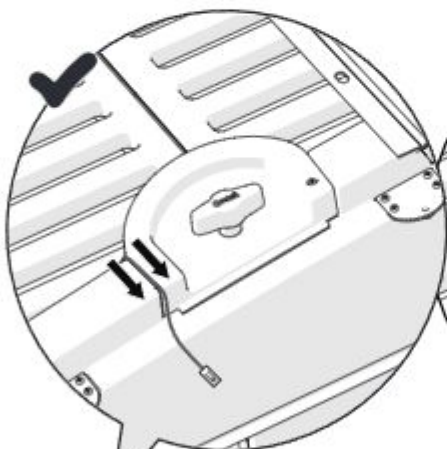
49



106.0017

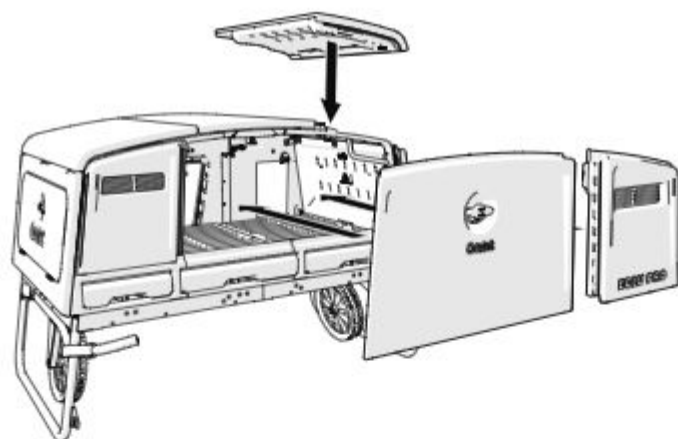


50

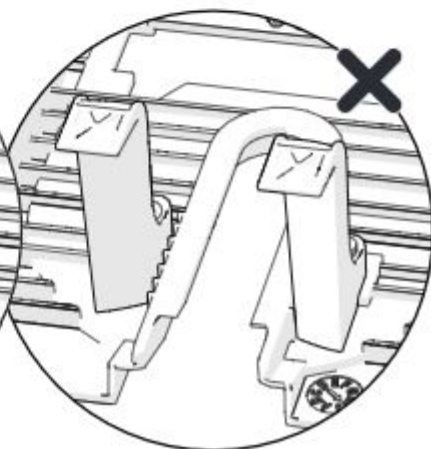
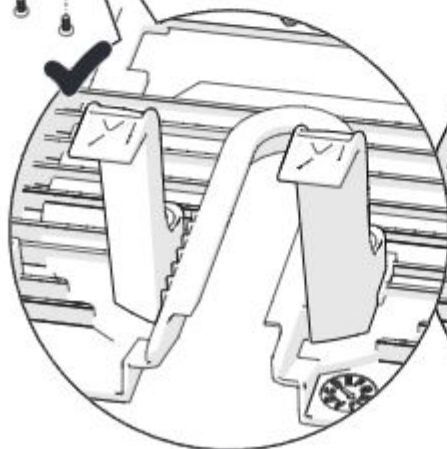
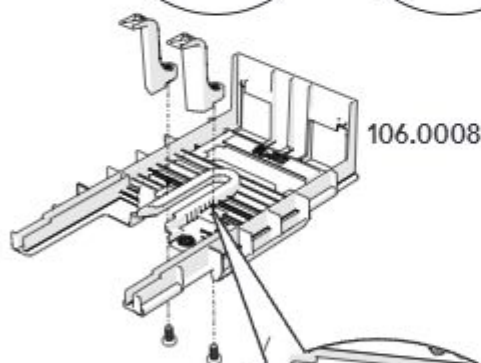




51

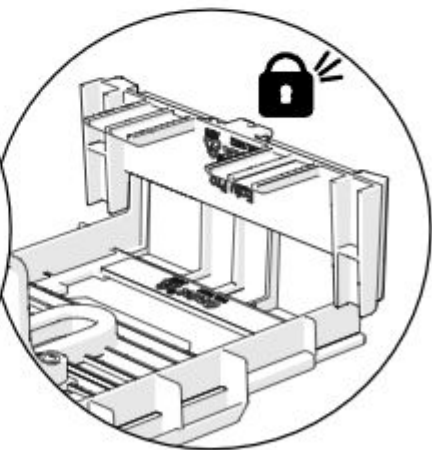
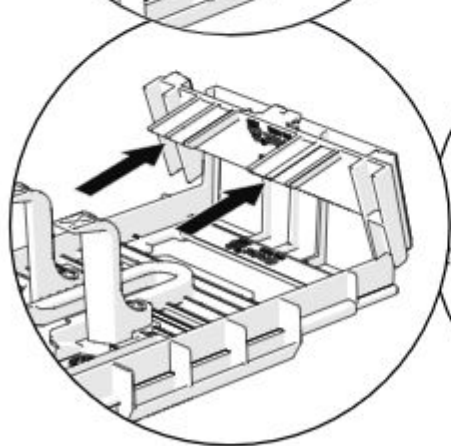
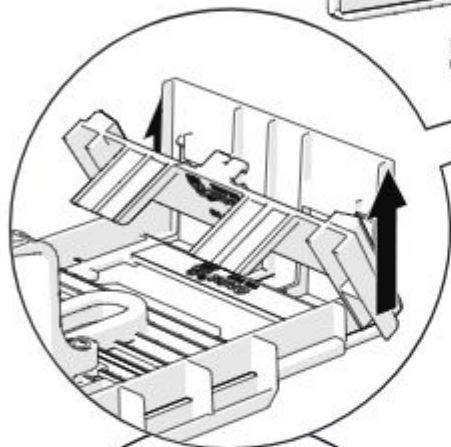
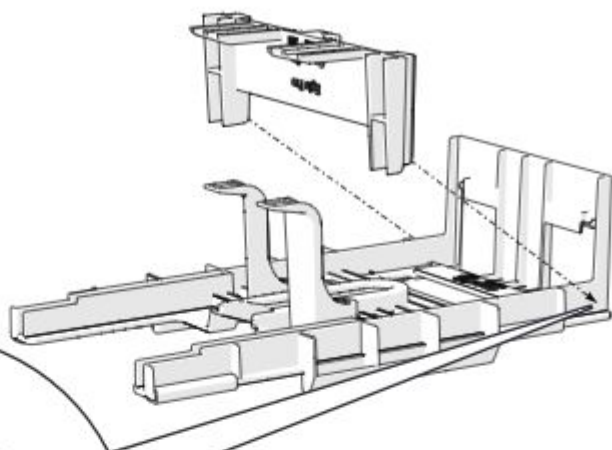


52

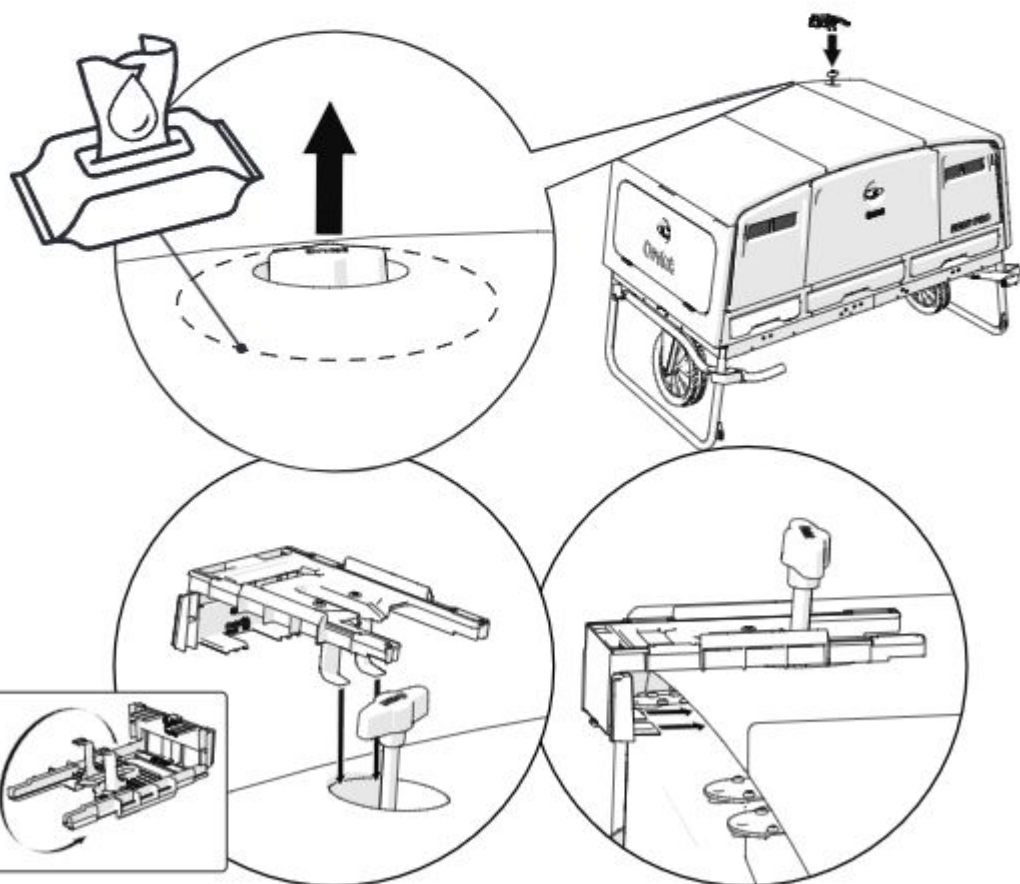




53



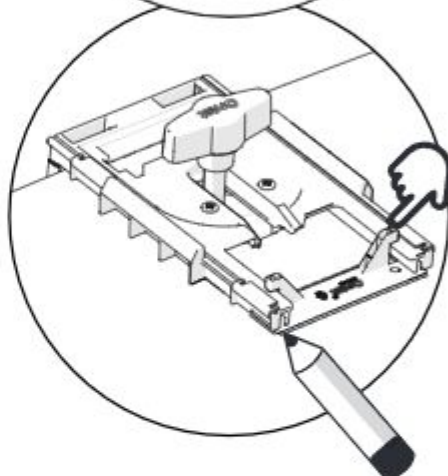
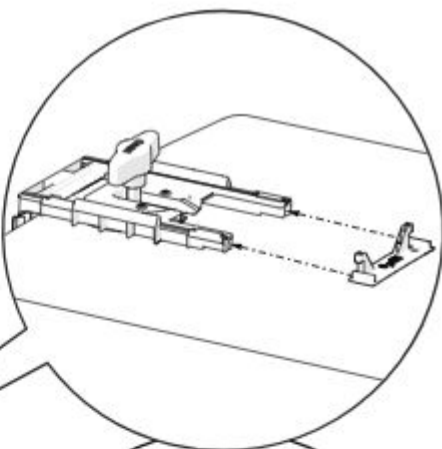
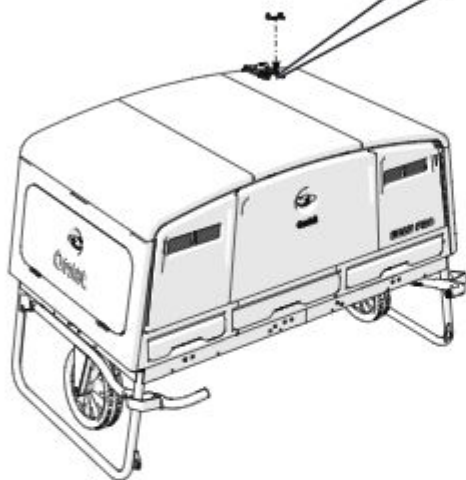
Make sure the area around your T-handle is clean and dry so your **Base Support (106.0014)** can stick to it easily



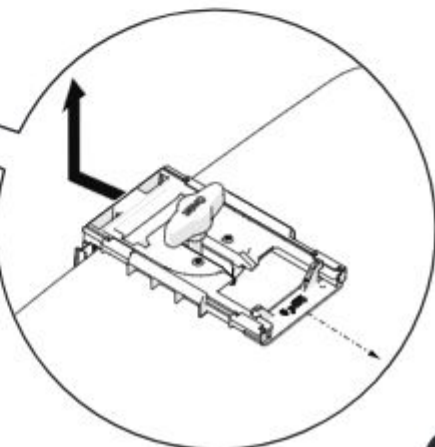
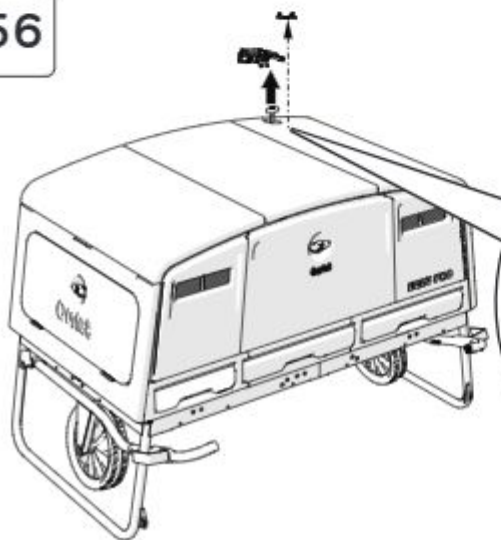
55



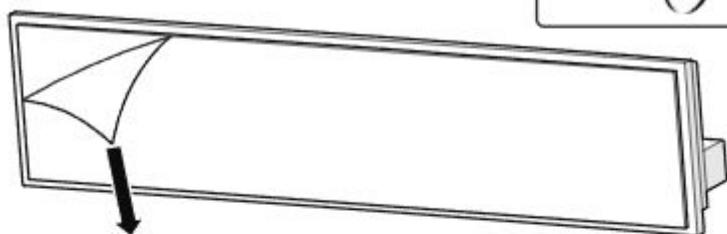
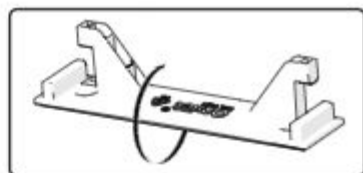
X1  
106.0014



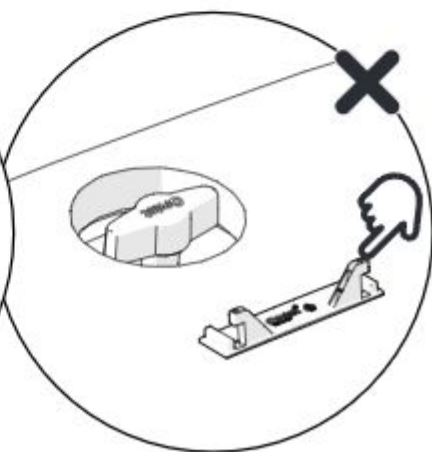
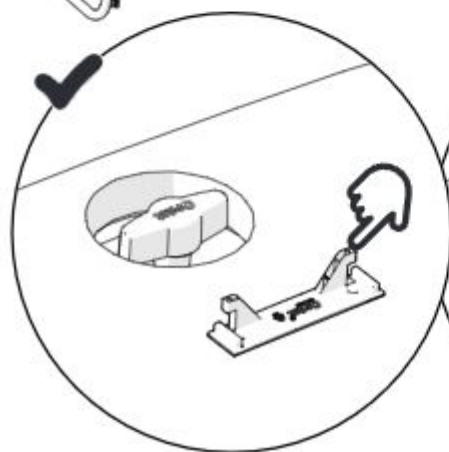
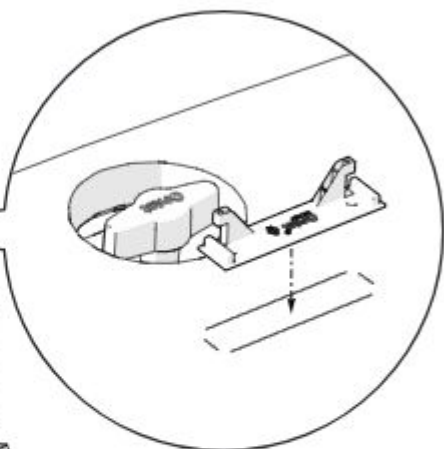
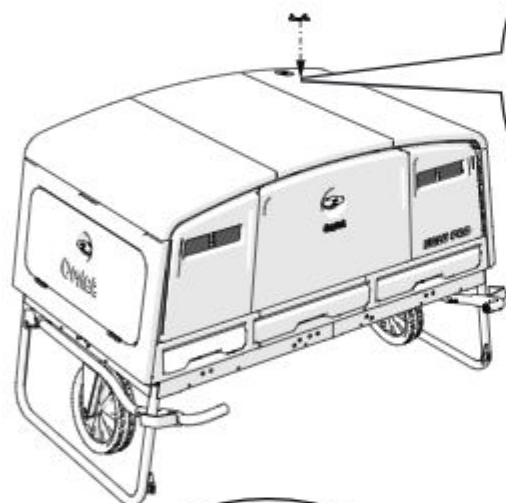
56



57

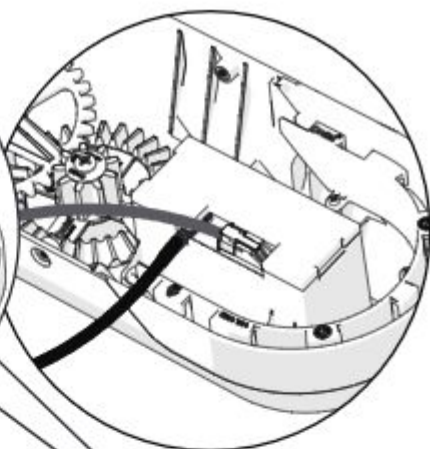
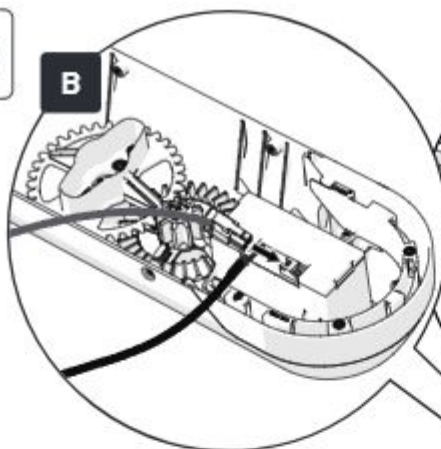


58

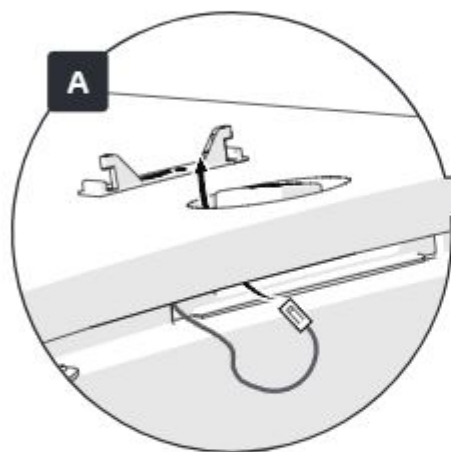


59

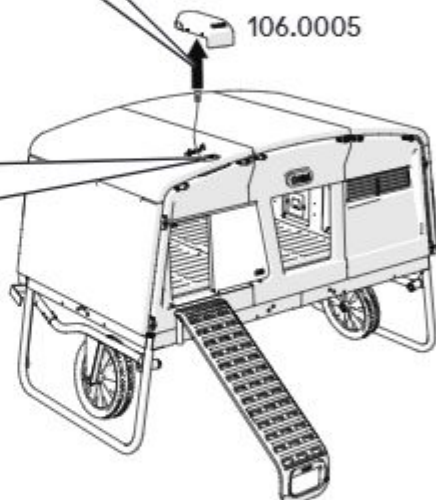
B



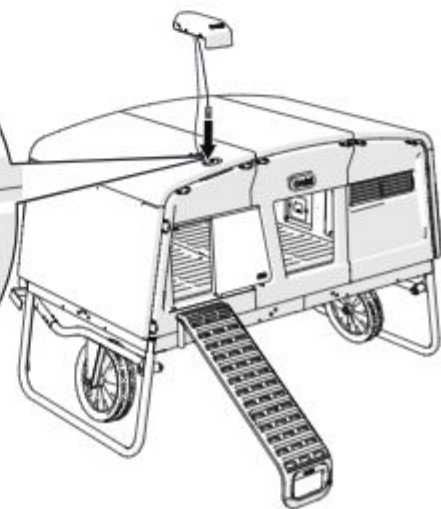
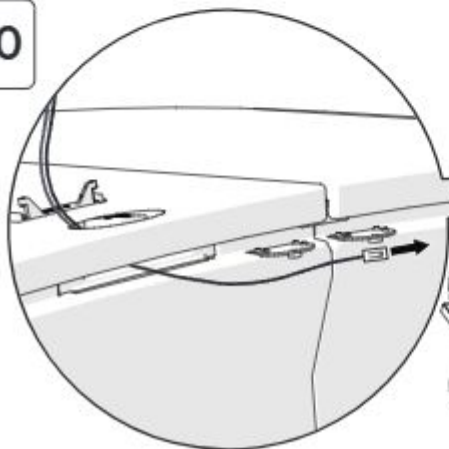
A

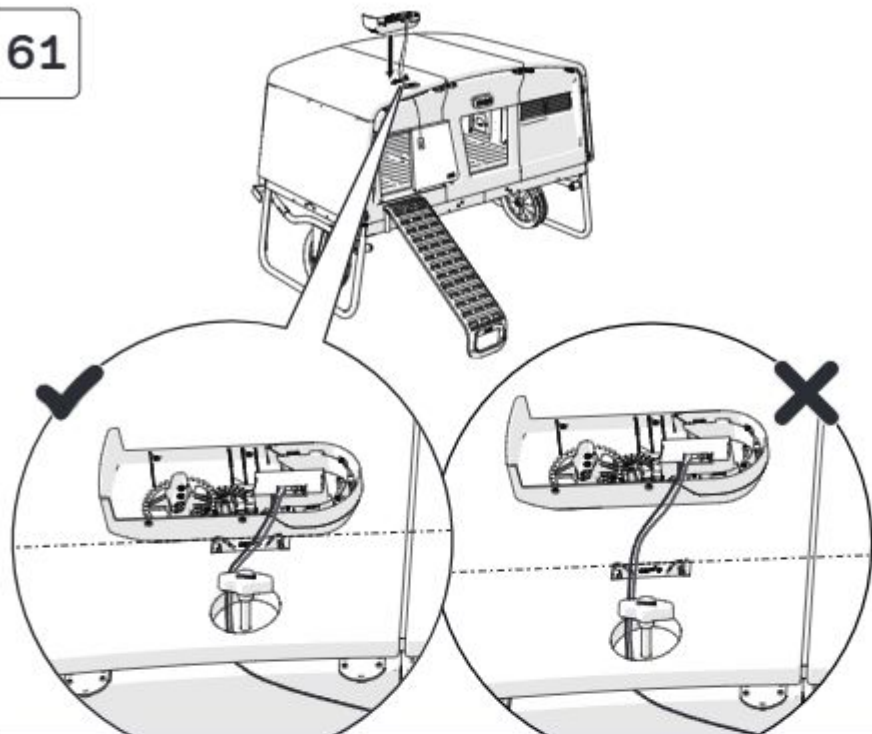


106.0005



60



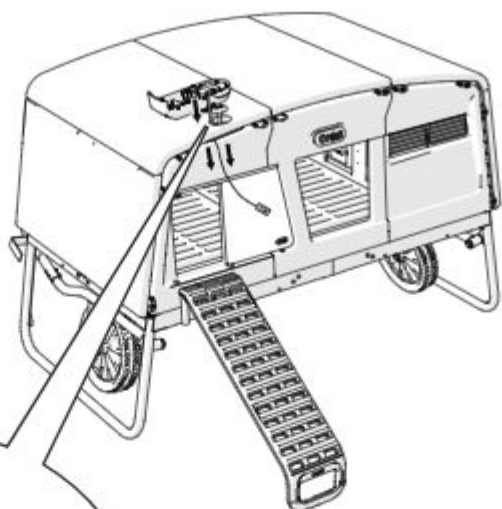


It is very important to position the gear case (106.0005) correctly on top of your coop to ensure wires will be the correct length during the next step

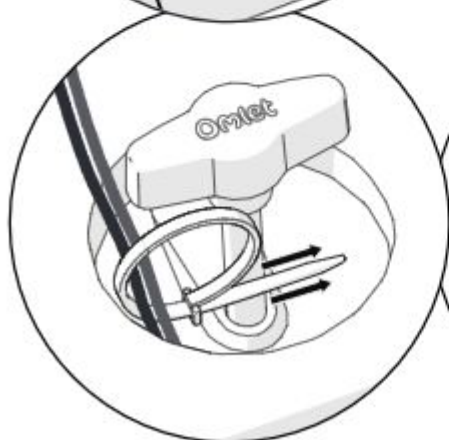
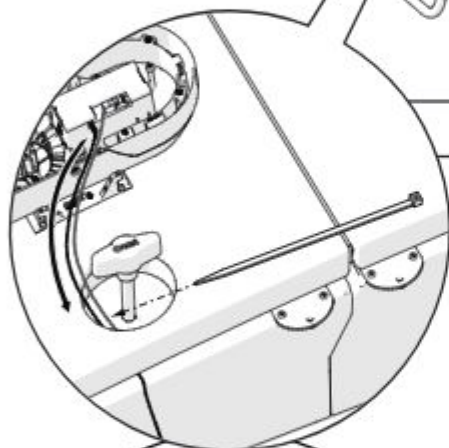




62

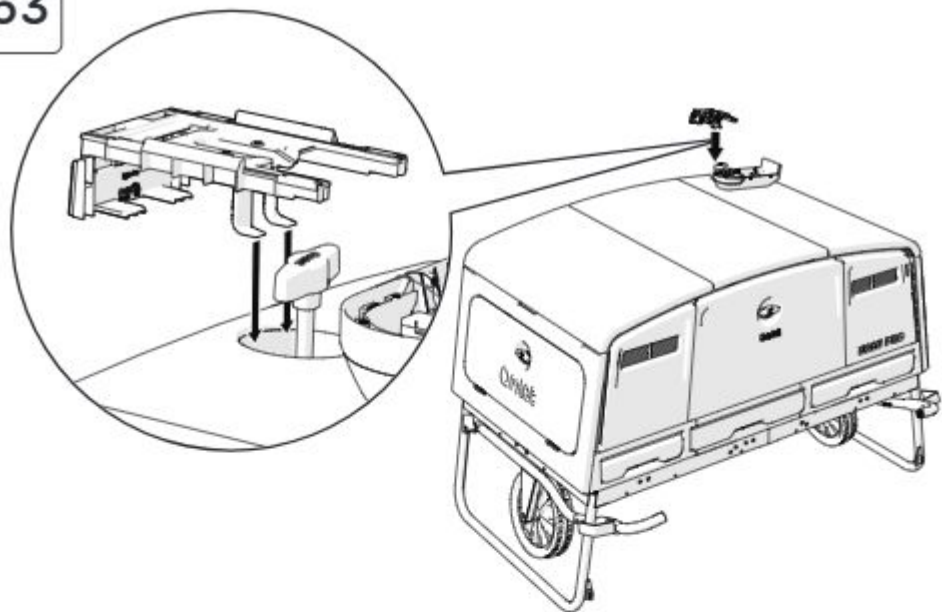


Pull wires tight

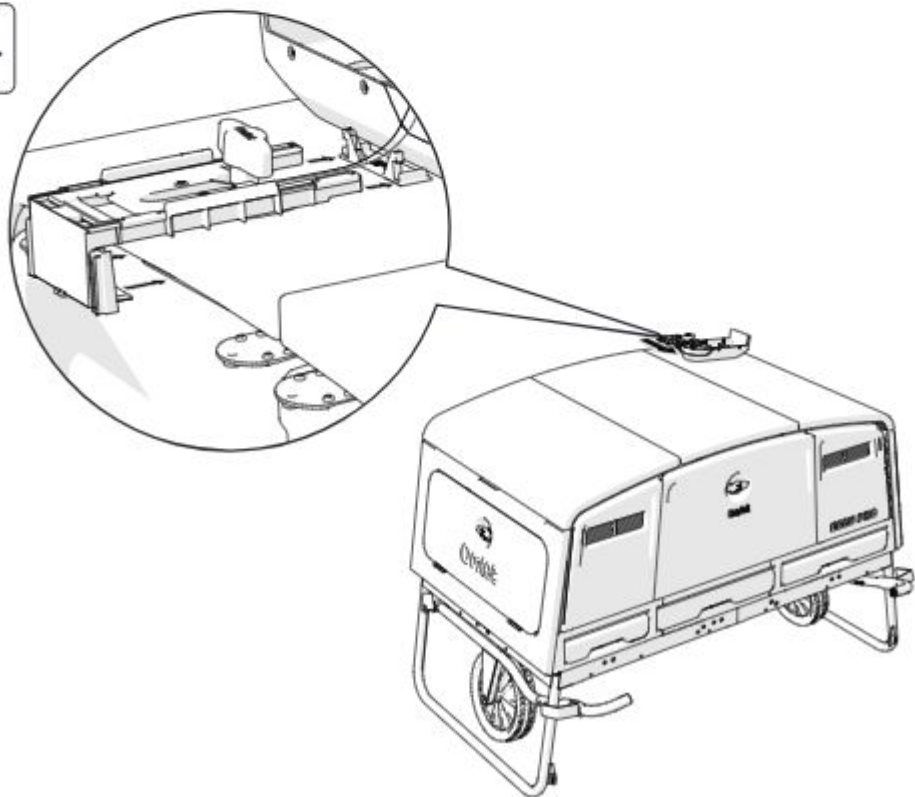




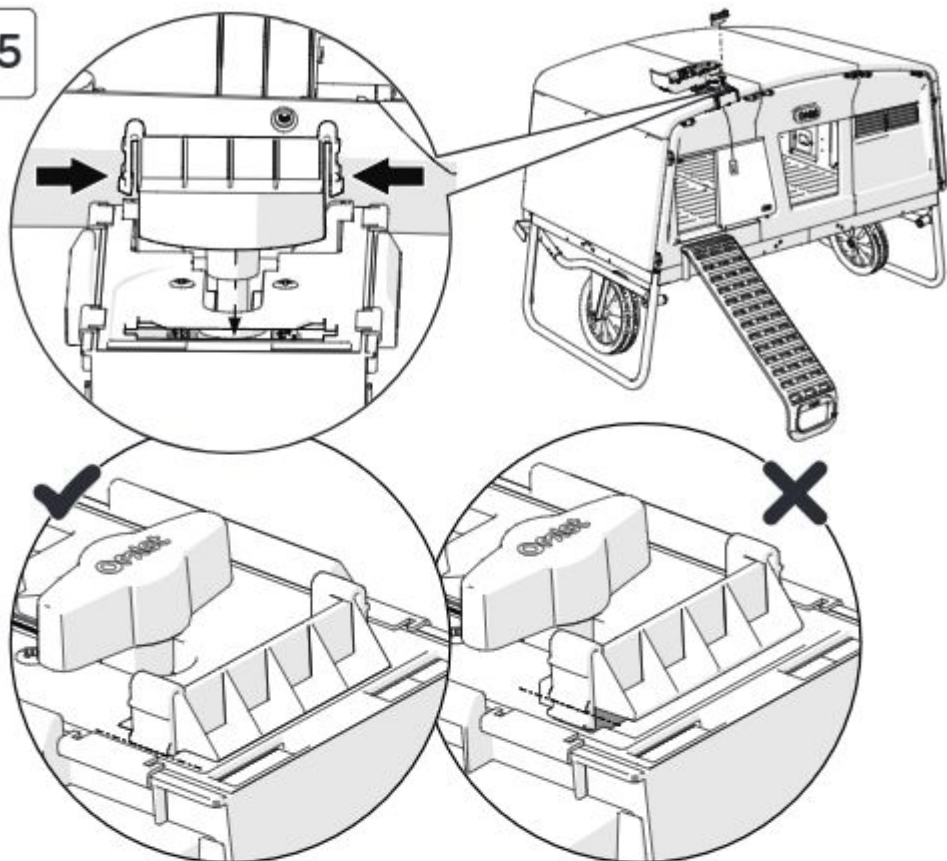
63



64

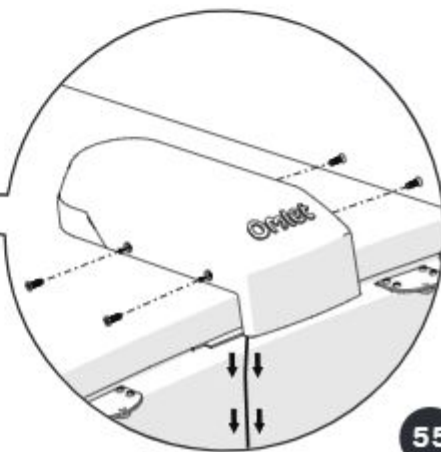
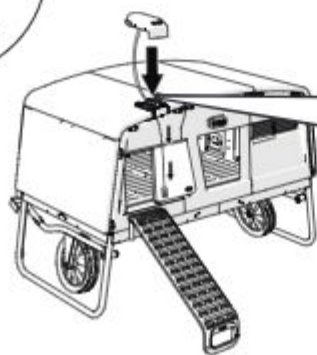


65

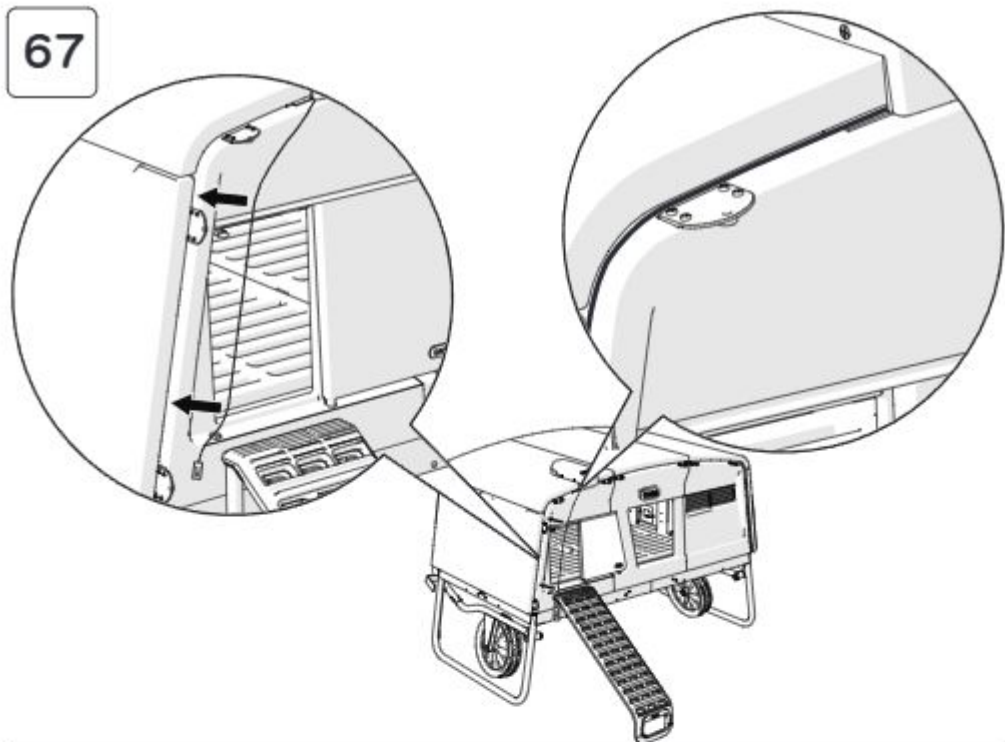


66

Pull wires tight



67



If you are attaching your coop to a Walk In Run Connection Kit

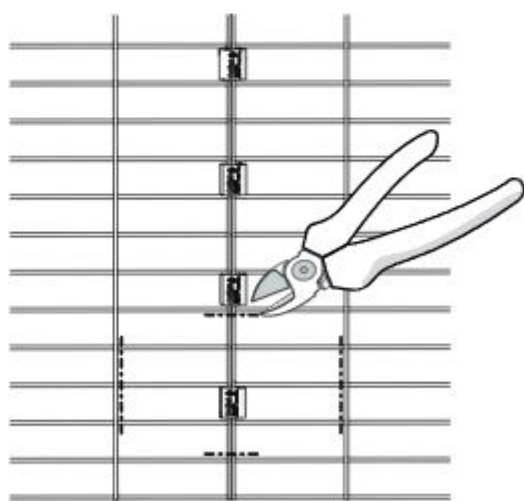
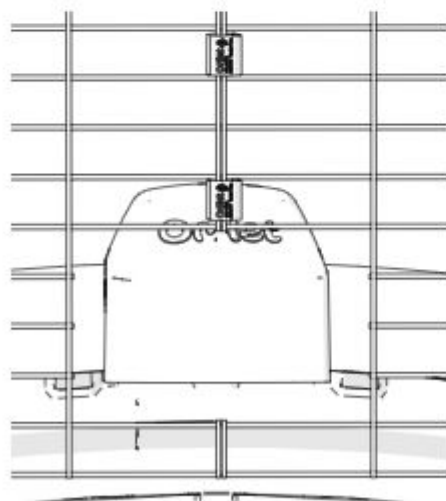
→ 69

To Assemble the Control Panel (107.0014)

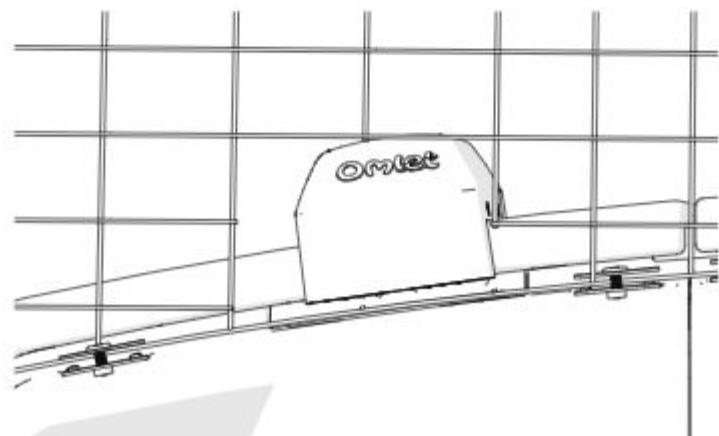
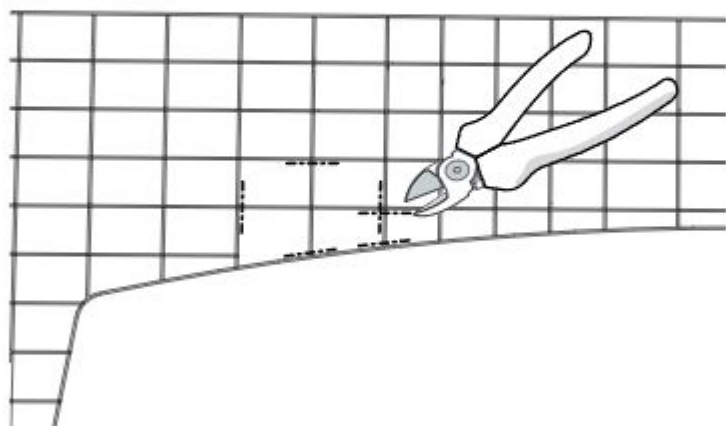
→ 70

68

Connecting the Eglu Go with Smart Rotary Eglu Autodoor to a Walk In Run (Connection Kit)



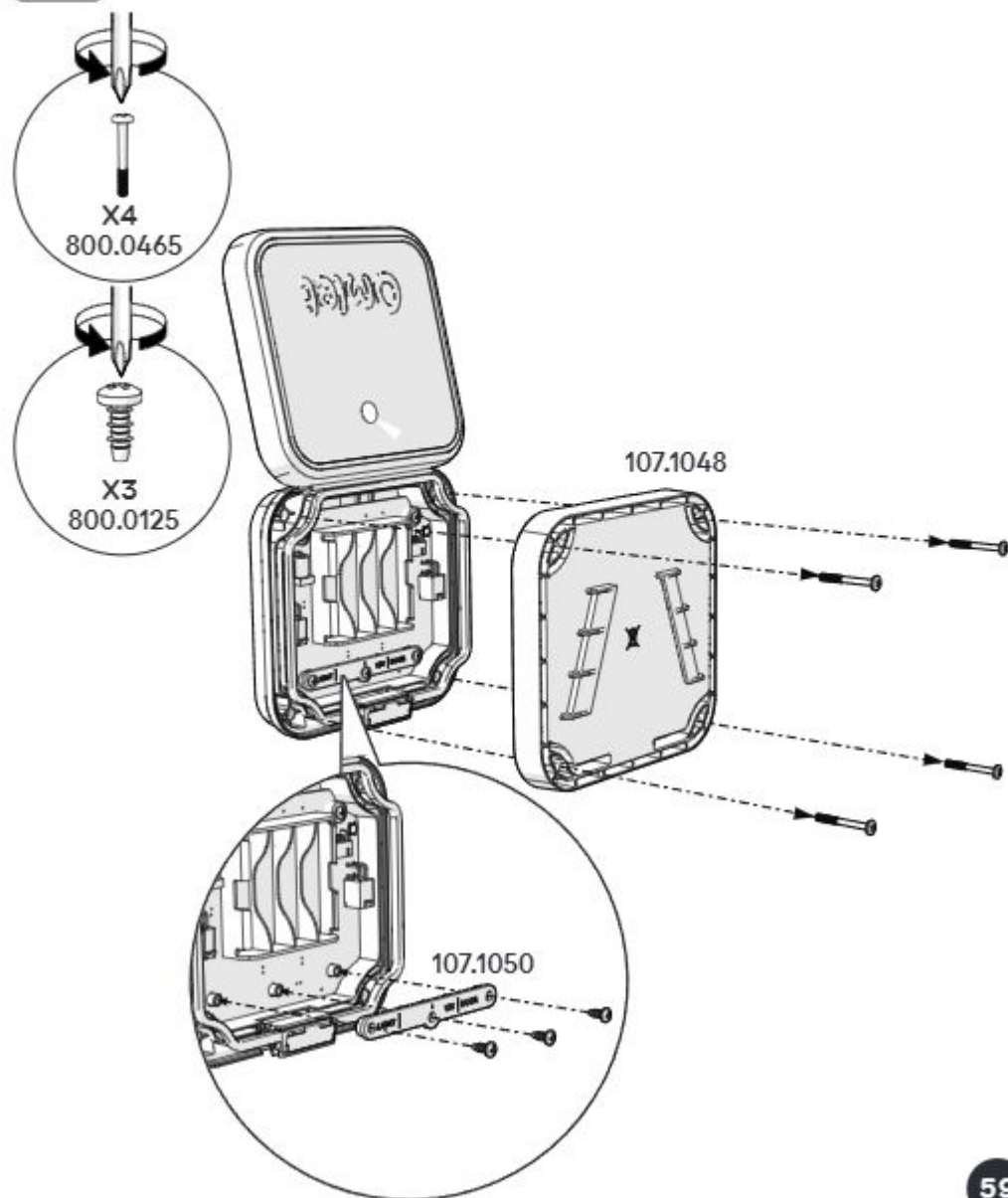
→ 70



## Assemble the control panel

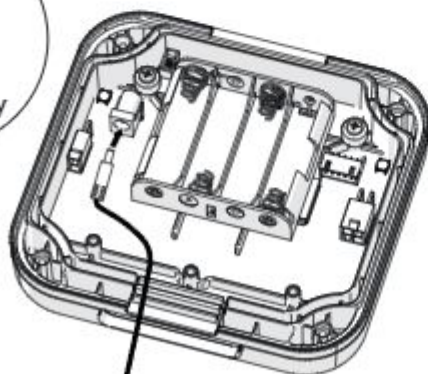
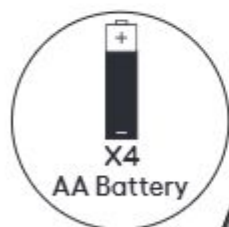
70

Keep the Parts safe until Steps 72-73



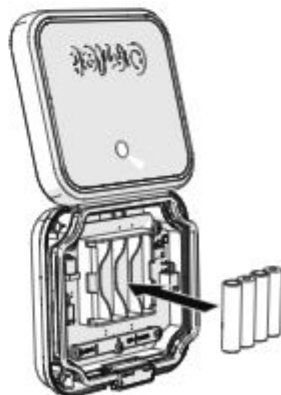
71

If connecting to Wi-Fi then use Power Adaptor.  
If not connecting to Wi-Fi then you have the option to use batteries or power supply. Do not use both simultaneously.



Omlet 12V Power  
Supply  
x1

or  
either  
of  
the  
two  
or  
either





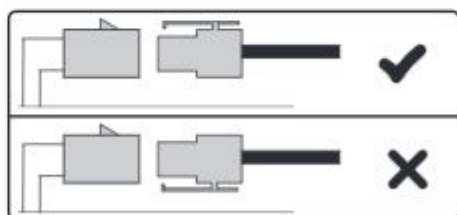
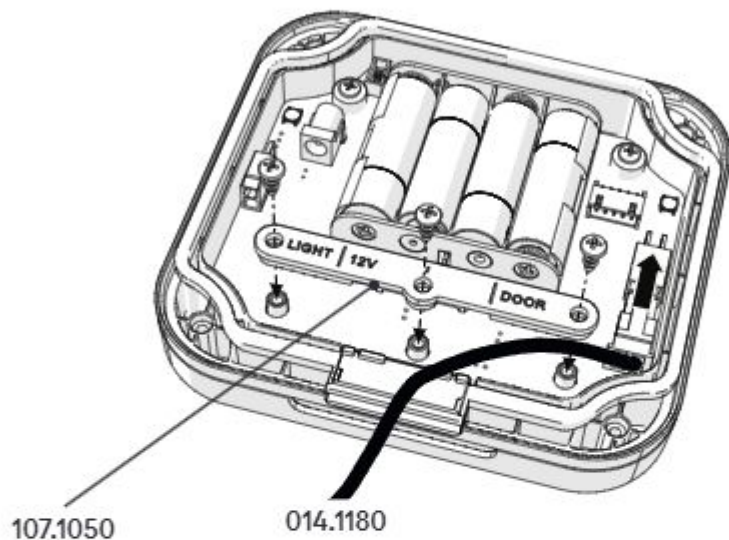
Check your batteries every 3 months. Always use 4 batteries of the same brand and energy level.



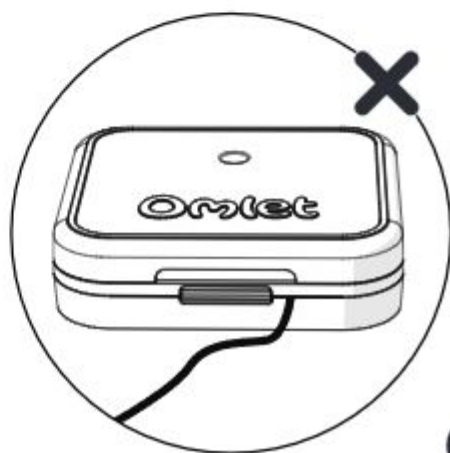
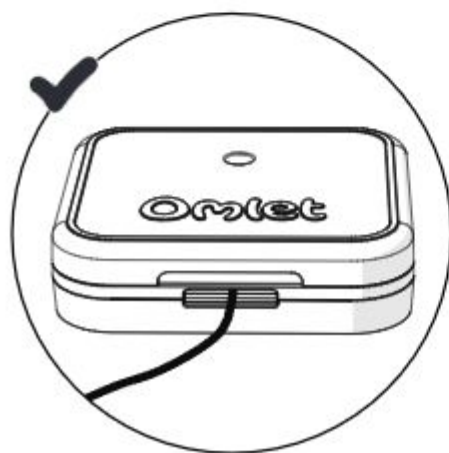
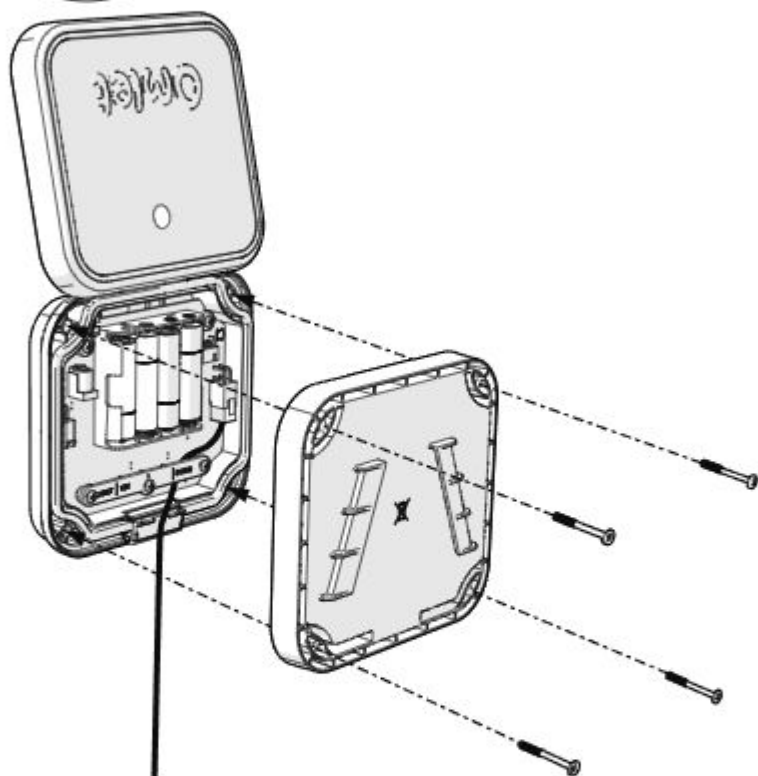
If you have a Coop Light, refer to Coop Light instruction manual now or scan the code or visit: [www.omlet.co.uk/instructions](http://www.omlet.co.uk/instructions)



72

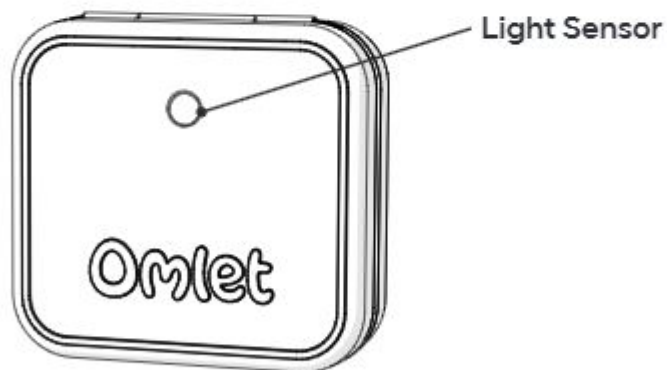


73

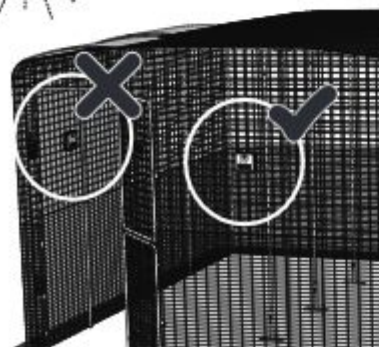
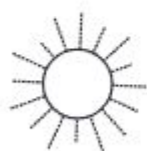


## 74 Mount the control panel

Mount the Control Panel so that the Light Sensor can receive natural light throughout the day.



Do not put the Control Panel under cover. Be aware, weather conditions, orientation, seasonal light levels and artificial lights around the house and garden can also significantly affect the light reading.



Eglu Go

→ 75

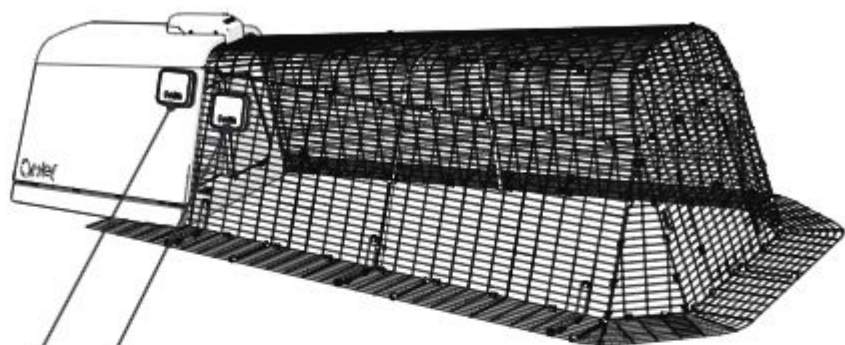
Eglu Cube Mk2

→ 82

Eglu Pro

→ 87

## 75 Mounting to the Eglu Go



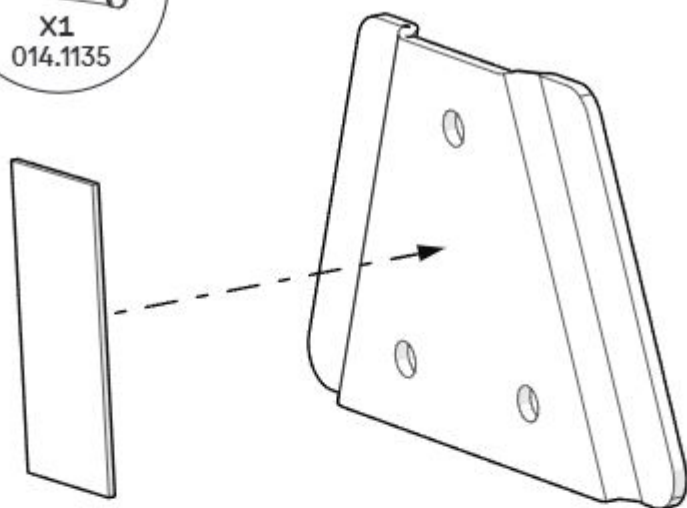
→ 76

→ 80

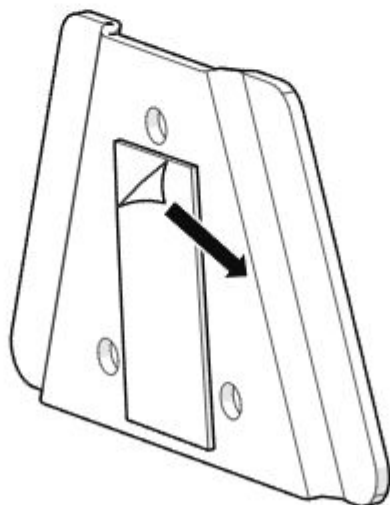
76



77

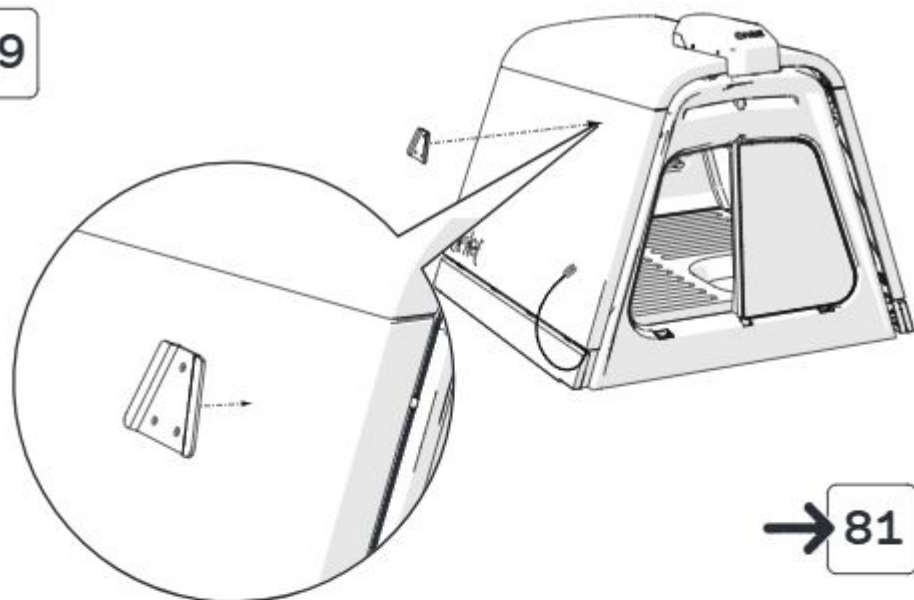


78



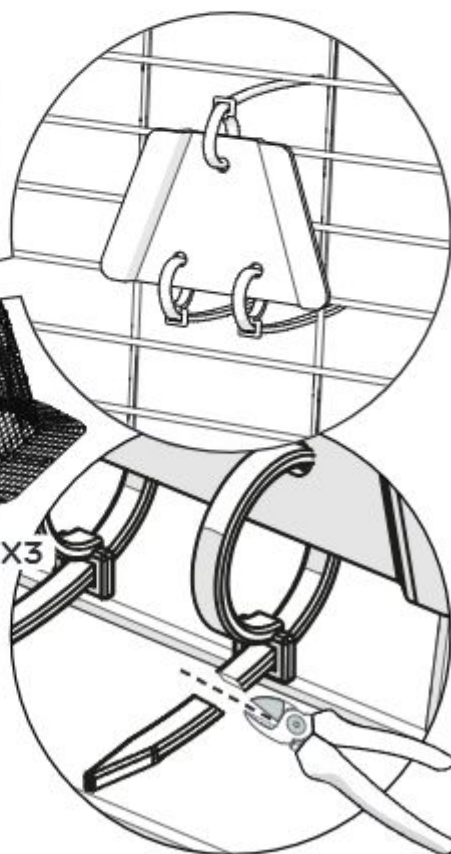
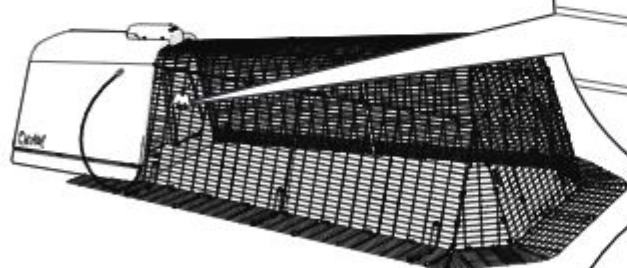
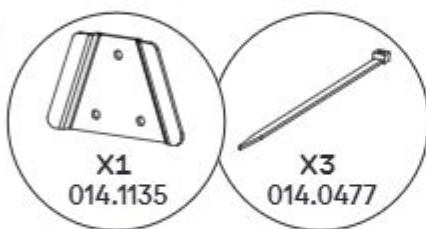


79

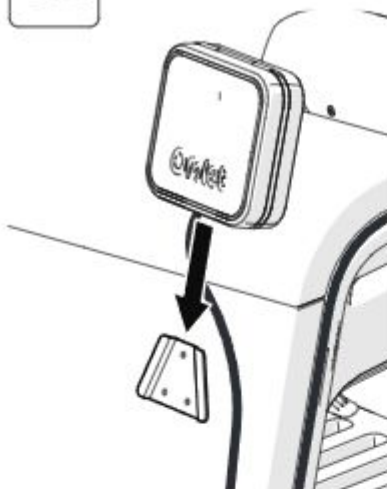


→ 81

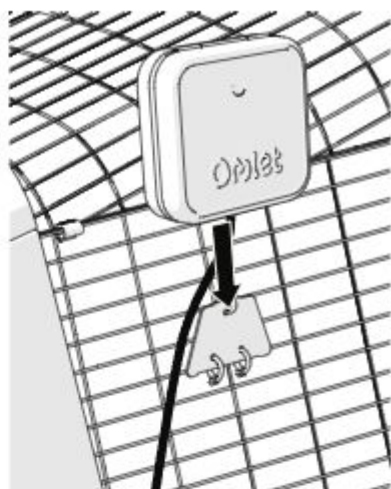
80



81



or



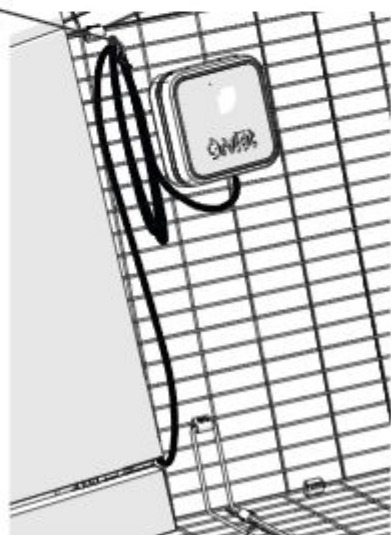
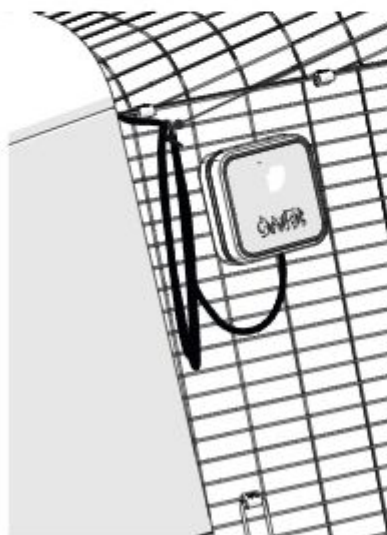
82

Optional



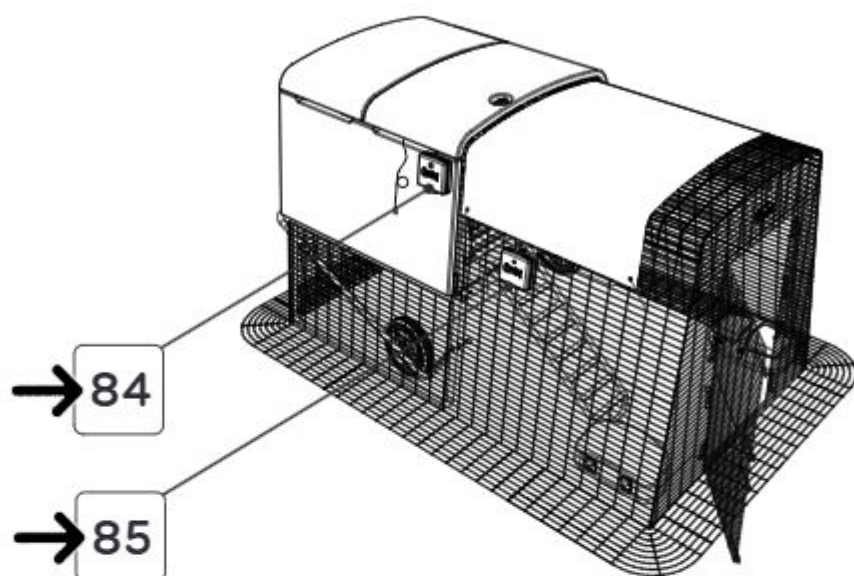
X1

or



→ 92

## 83 Mounting to the Cube



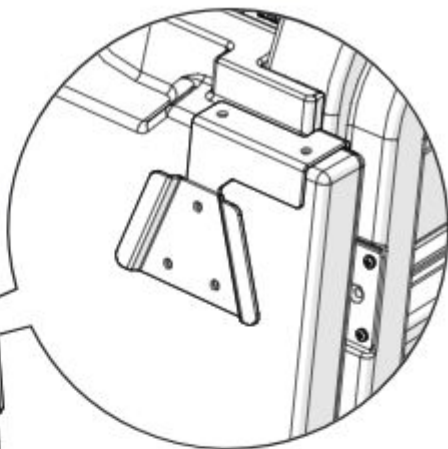
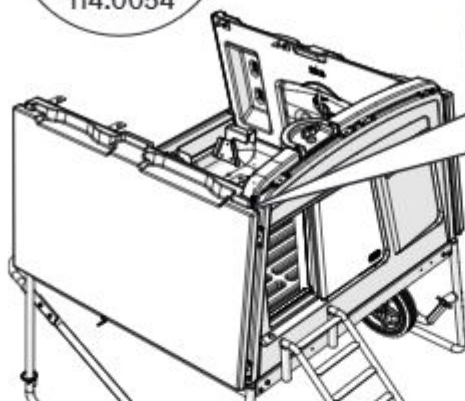
If you haven't removed the roof, you can remove one bolt at the front and pull the corner up to slide the bracket on.



84



X1  
114.0054



→ 86

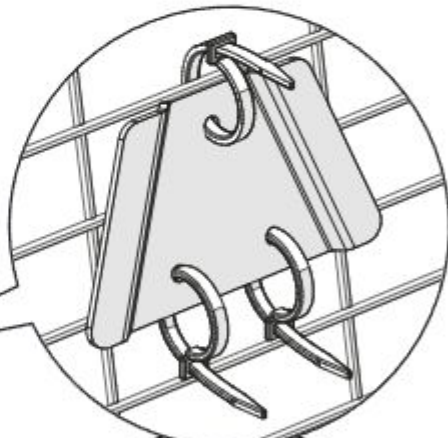
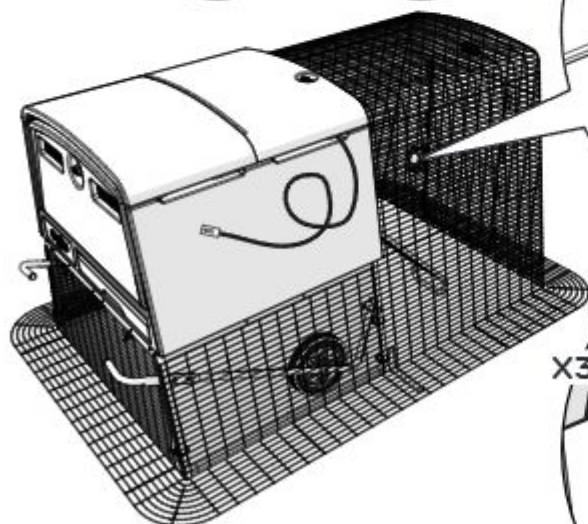
85



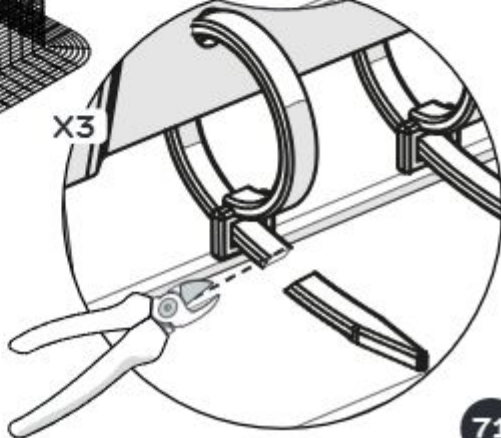
X1  
014.1135



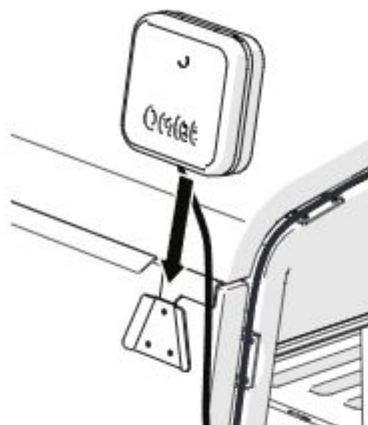
X3  
014.0477



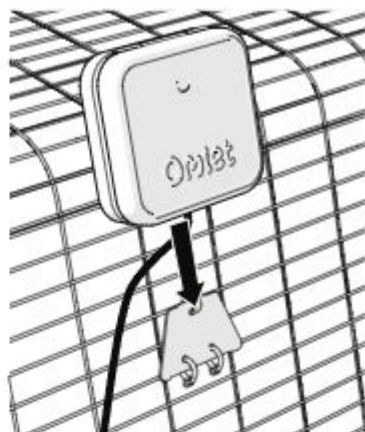
X3



86



or

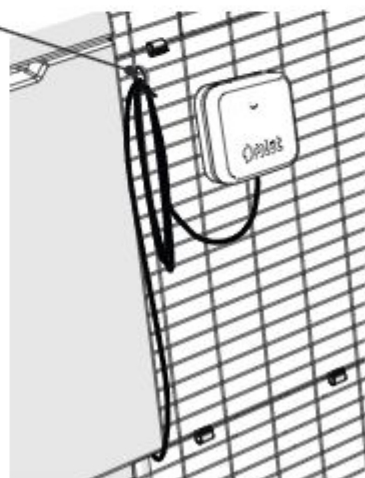
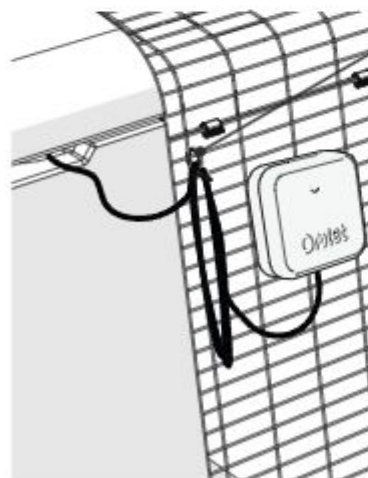


87 Optional



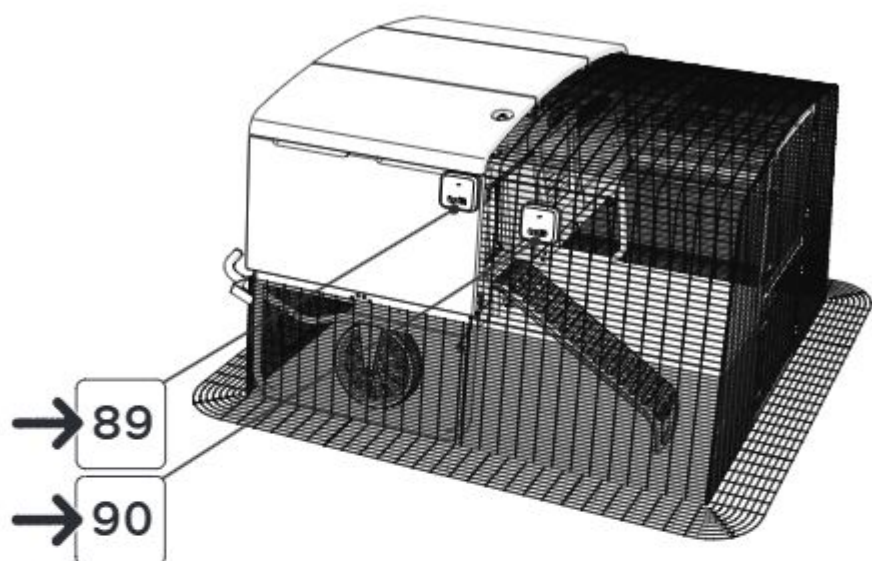
X1

or



→ 93





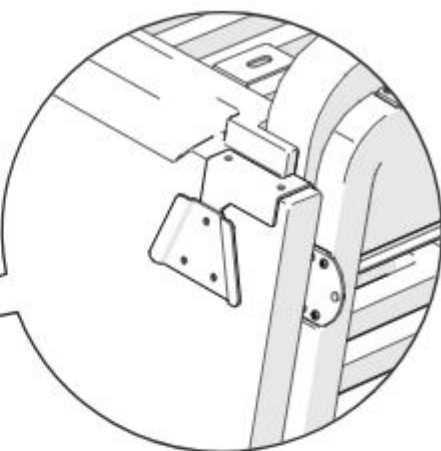
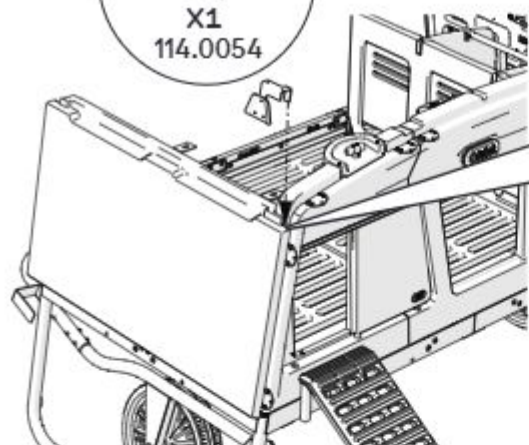
If you haven't removed the roof, you can remove one bolt at the front and pull the corner up to slide the bracket on.



89



X1  
114.0054



→ 91

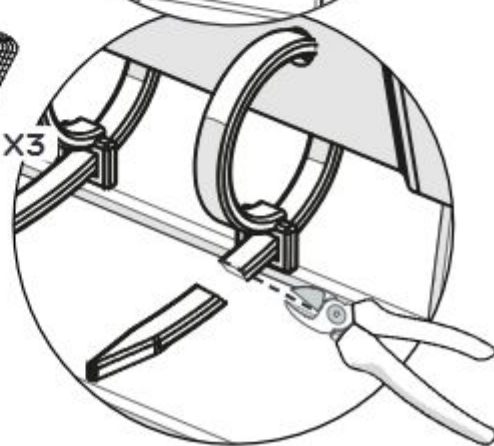
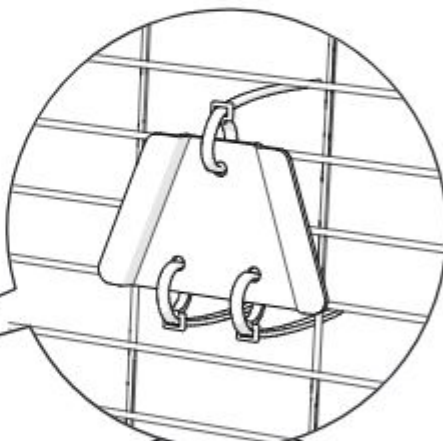
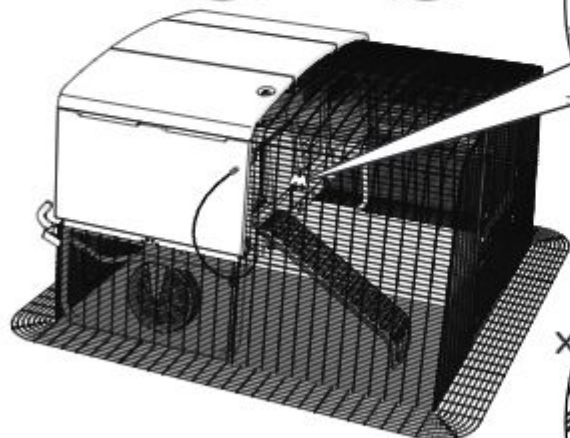
90



X1  
014.1135

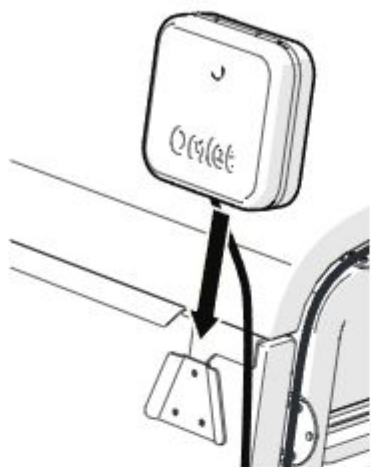


X3  
014.0477

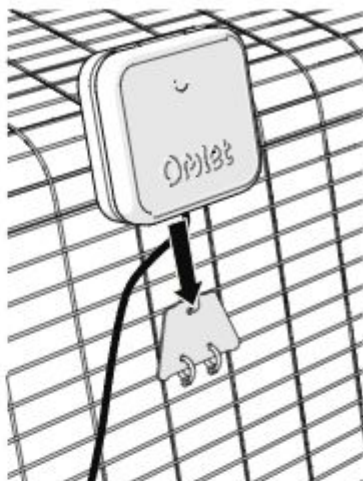




91



or



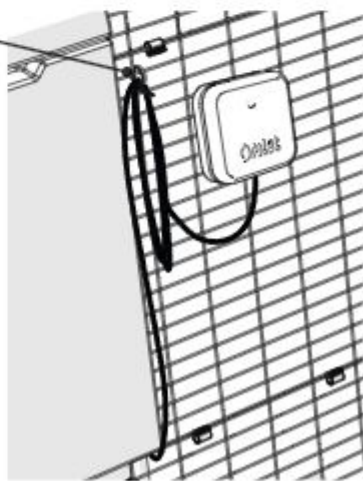
92

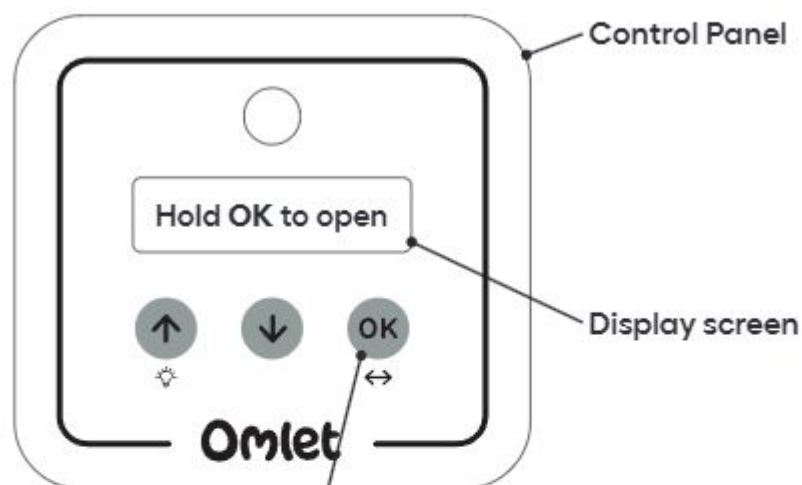
Optional



X1

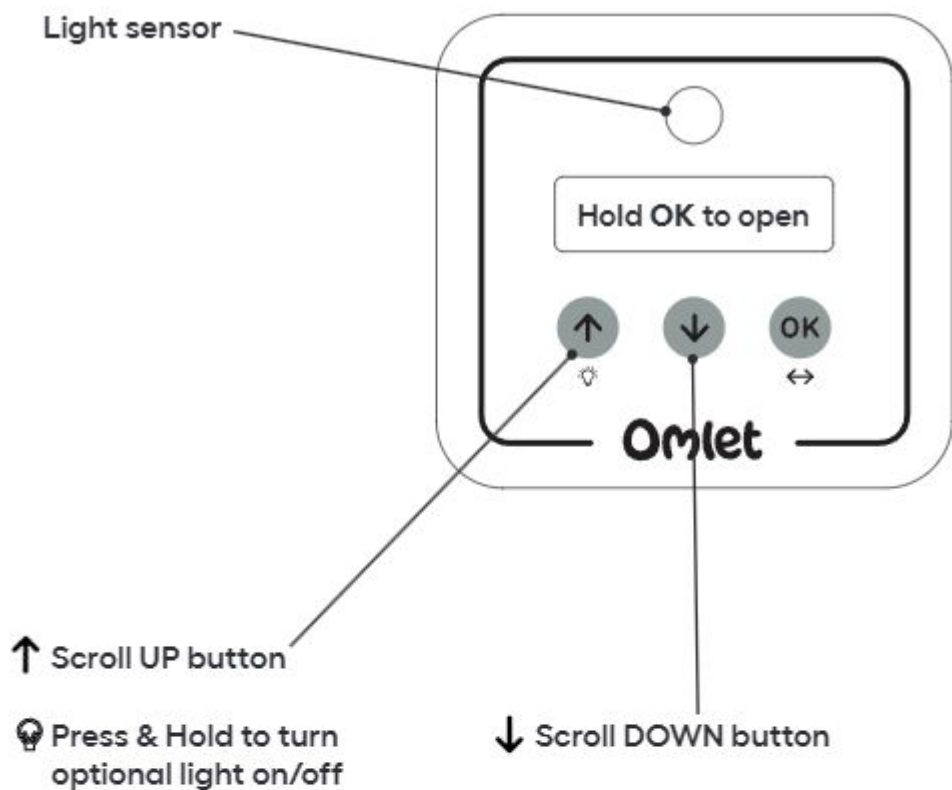
or






**OK** Select / OK button

↔ Press & Hold to open/  
close door





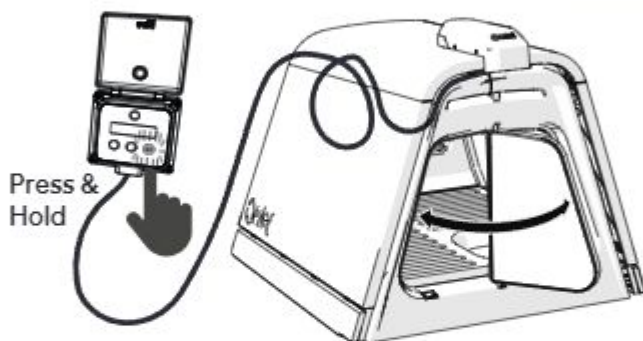
## 95 Calibration

When you plug your Smart Rotary Eglu AutoDoor in for the first time, it will need to detect the door position. Press & Hold button 


The Smart Rotary Eglu AutoDoor will automatically calibrate itself by moving the door once in each direction. Please ensure the Smart Rotary Eglu AutoDoor is not blocked during calibration.

During Calibration the control panel will read:

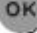
Calibrating...





## 96 Optional: Change Language

1. Press the  button to scroll through the menu until you reach this screen:

Language: En

2. Press & Hold  enable changing the language. The current language will flash

Language: - En -

3. Use   scroll through the languages until you reach the desired language


Language: - En -

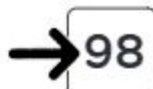
4. Press and hold  confirm the language update

--Saved--

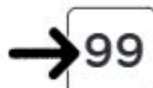
## 97 Selecting your Smart Rotary Eglu AutoDoor mode

The Smart Rotary Eglu AutoDoor has 3 modes:

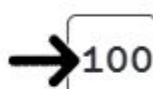
• **MANUAL** - The door will open and close if you Press & Hold  button.






• **TIME** - You can set the Smart Rotary Eglu AutoDoor to open and close at specific times of the day.



• **LIGHT** - This is the default mode. The Smart Rotary Eglu AutoDoor will open using the light sensor.



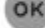
## 98 Manual Mode



Press any of the three buttons    and the screen will read:

Hold to Open

or

Hold to Close

Hold the  button to either open or close the door.

To proceed through the menu press   to scroll up & down through the menu items.

In the Manual Mode menu you see the following:

Hold to Open

This displays the battery charge level.

Battery: 100%

This displays the current Mode setting.

1. Mode: Manual

This gives you the option to reset the Control Pack back to its default settings following any changes you make.

5. Factory Reset

## 99 Time Mode



The Smart Rotary Eglu AutoDoor uses the 24-hour clock, to prevent any ambiguity. The time will reset when batteries are taken out. Make sure to update the current time after every battery exchange.

### Setting the Mode

1. Press for a short time to scroll through the options until you reach the mode

1. Mode: Manual

2. Press & Hold to enable changing the value. The current mode will flash

1. Mode: Manual

3. Use to scroll through the modes

1. Mode: Manual

1. Mode: Time

4. Press & Hold to confirm the value change

--Saved--

### Setting the Current Time

1. Press for a short time to scroll through the options until you reach the mode menu item

2. Time: 14:23

2. Press & Hold until the minutes begin to flash

2. Time: 14:-23-

3. Press or to set the minutes

2. Time: 14:-05-

4. Press to switch to hours which will flash to confirm they are selected

2. Time:-14-:05

5. Press or to set the hours









2. Time:-18-:05

6. Press & Hold to confirm. The display will read -saved-

--Saved--



## Setting the Opening Time

1. Press  for a short time to scroll through the options you reach the display on the right
2. Press & Hold  until the minutes begin to flash
3. Press  or  to set the minutes
4. Press  to switch to hours which will flash to confirm they are selected
5. Press  or  to set the hours
6. Press & Hold  to confirm.

3. Open @ 01:00

3. Open @ 01:-00-





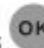



3. Open @ 01:-30-

3. Open @ -01:-30

3. Open @ -08:-30

--Saved--

## Setting the Closing Time

1. Press  for a short time to scroll through the options you reach the display on the right
2. Press & Hold  until the minutes begin to flash
3. Press  or  to set the minutes
4. Press  to switch to hours which will flash to confirm they are selected
5. Press  or  to set the hours
6. Press & Hold  to confirm.

4. Close @ 01:00

4. Close @ 01:-00-

4. Close @ 01:-15-

4. Close @ -01:-15

4. Close @ -19:-15

--Saved--

## 100 Light Mode



If the light level where the control panel is located changes frequently (busy neighbourhood) light mode may not function as expected - please switch to Time Mode




100%

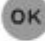


0%

### Setting the Mode

1. Press  for a short time to scroll through the options until you reach the mode

1. Mode: Manual

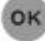
2. Press & Hold  to enable changing the value. The current mode will flash

1. Mode: Manual

3. Use   to scroll through the modes

1. Mode: Manual

1. Mode: Light


4. Press & Hold  to confirm the value change

--Saved--


### Setting the Light Opening Level



The door opening light level should be set to a higher percentage than the door closing light level. The two values should at least be 10% apart from each other. We recommend starting with 13 and 3, then adjust to suit as the location of the coop can effect the light levels. Adjustments may be needed with the change of seasons.

1. Press  for a short time to scroll through the options until you reach the display on the right

3. Open @ 27

2. Press & Hold  until the numbers begin to flash

3. Open @ 27


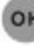



3. Press  or  to set the level

3. Open @ 13

4. Press & Hold  to confirm

--Saved--

## Setting the Light Closing Level

1. Press  for a short time to scroll through the options until you reach the display on the right
2. Press & Hold  until the numbers begin to flash
3. Press  or  to set the level
4. Press & Hold  to confirm

4. Close @ 6

4. Close @  6






4. Close @  3

--Saved--

## Setting the Open Delay



The autodoor has a default factory delay set at 20 minutes after the light reaches the required level. You cannot go below 20 minutes and can only manually set additional delay minutes. This is in order to prevent any accidental opening or closing of the door when the light level changes for short periods of time, e.g. if a car drove past with headlights on.

1. Press  for a short time to scroll through the options until you reach the display on the right
2. Press & Hold  until the numbers begin to flash
3. Press  or  to set the minutes
4. Press & Hold  to confirm

5. Open Delay 0m

5. Open Delay  0m


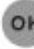


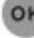
5. Open Delay  7m

--Saved--

## Setting the Close Delay

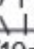


Same principle as at opening delay - See above.

1. Press  for a short time to scroll through the options until you reach the display on the right
2. Press & Hold  until the numbers begin to flash
3. Press  or  to set the minutes
4. Press & Hold  to confirm

6. Close Delay 0m

6. Close Delay  0m

6. Close Delay  10m

--Saved--

In the event that

- 1) the motor fails,
- 2) the batteries go flat,
- 3) or there is any other blockage

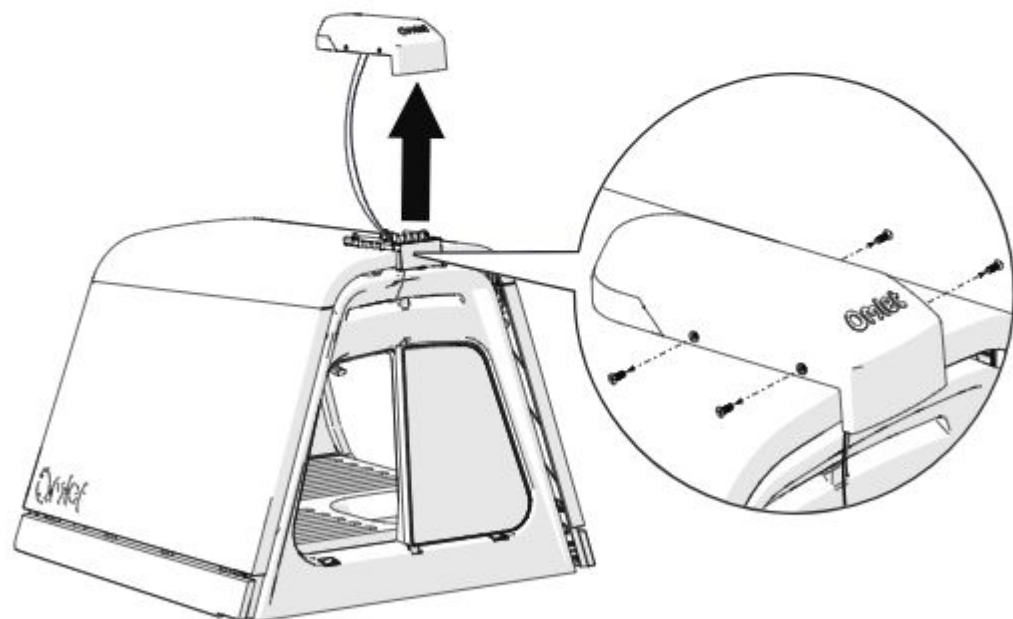
you can move the door manually by removing the gear case (106.0005) and using the T-Handle, as well as trying out the following



102



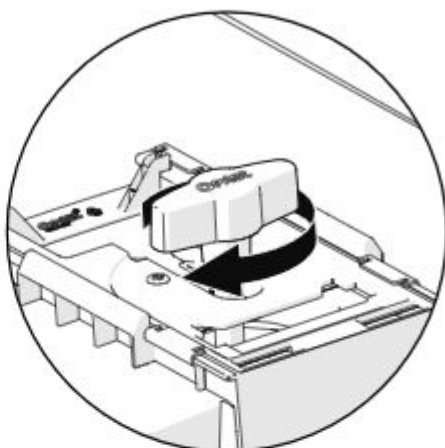
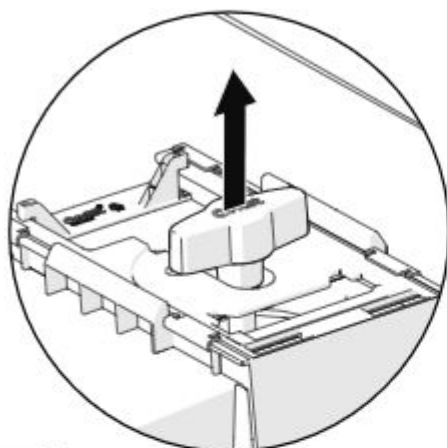
Keep the Parts safe until Step 106



While troubleshooting keep the Gear Case (106.0005) close to T-Handle to keep the wires at the correct length. If necessary pull the wires tight again while replacing the Gear Case (106.0005) in Step 106

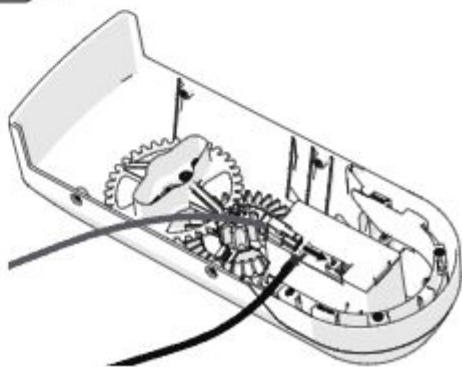


## 103 Manually Moving the Door

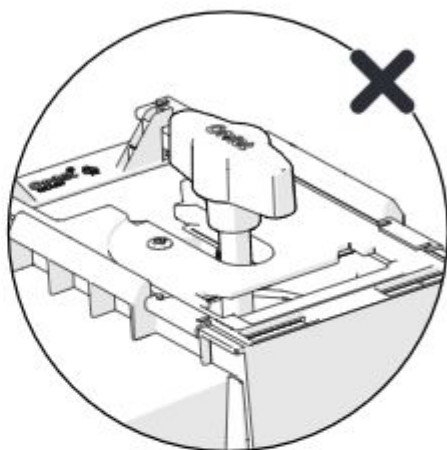
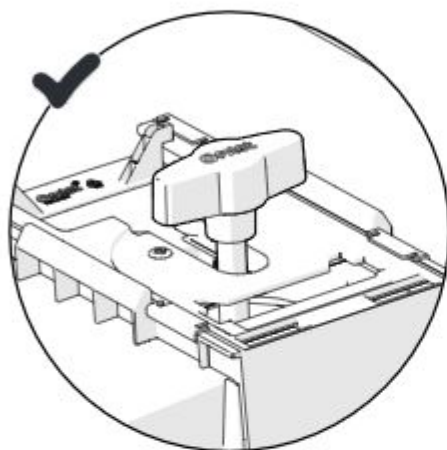


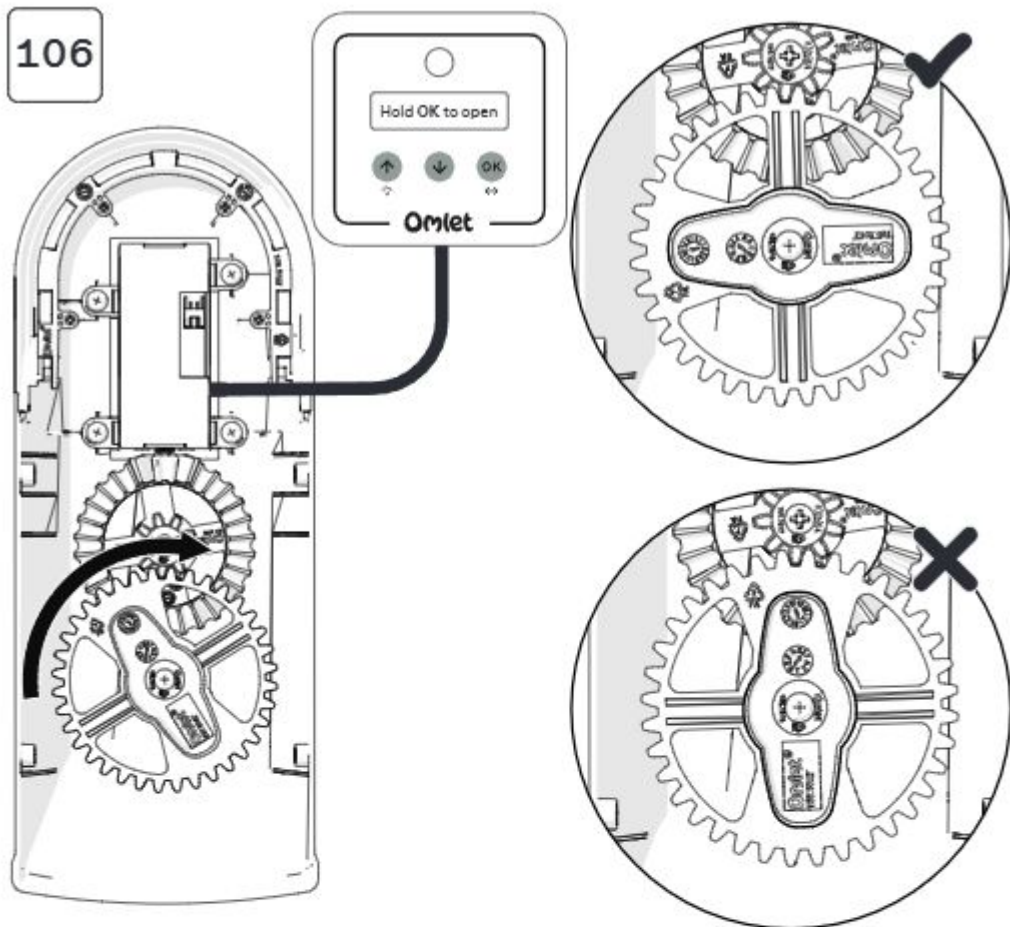
## 104 Troubleshooting the Door Switch (106.0017)

**Make sure the wire is connected properly**





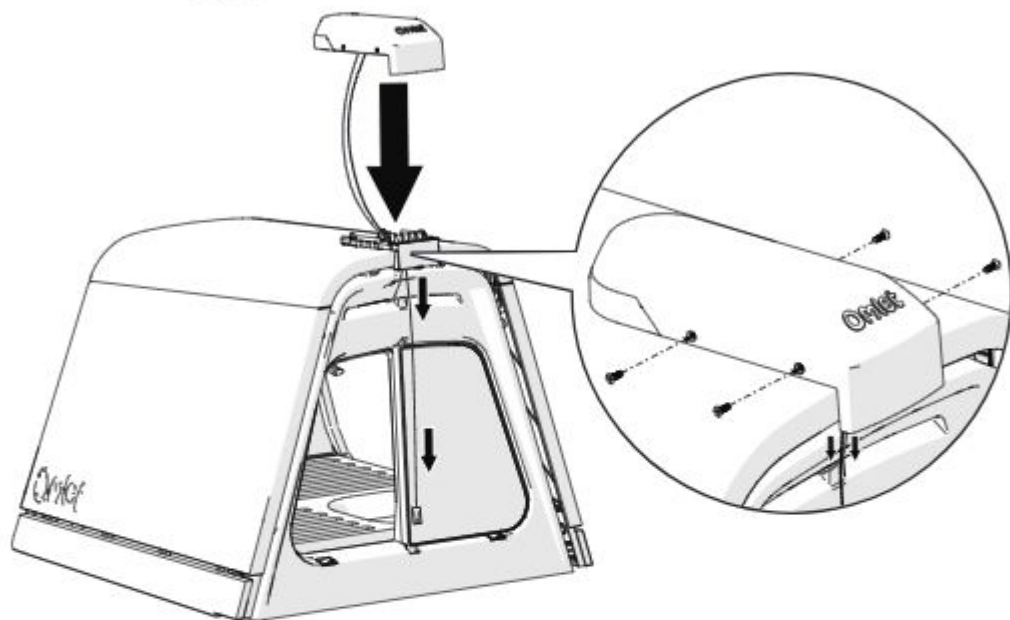




Hold the **OK** button until the motor spins. Press **OK** to stop the motor when it is in the correct position



Pull wires tight



After rain in freezing temperatures, sleet or snow you may need to defrost your Autodoor to restore proper function to moving parts. To do this we recommend pouring warm (not boiling) water over any affected parts and then drying them



# HERE'S WHERE IT STARTS

## Omlet



Please reuse,  
compost,  
recycle.

© Copyright Omlet Ltd. 2025

Design registered, patent pending

Omlet and Eglu are registered trademarks of Hebe Studios Ltd.

820.2408\_Instruction Manual Smart Rotary Eglu

Autodoor\_ 23/04/2025



FR

Cet appareil,  
ses accessoires  
et cordons  
se recyclent

À DÉPOSER  
EN MAGASIN



ou

À DÉPOSER  
EN DÉCHÈTERIE



Points de collecte sur [www.quelitedemarchets.fr](http://www.quelitedemarchets.fr)  
Privilégiez la réparation ou le don de votre appareil !



5 055358 859485 >